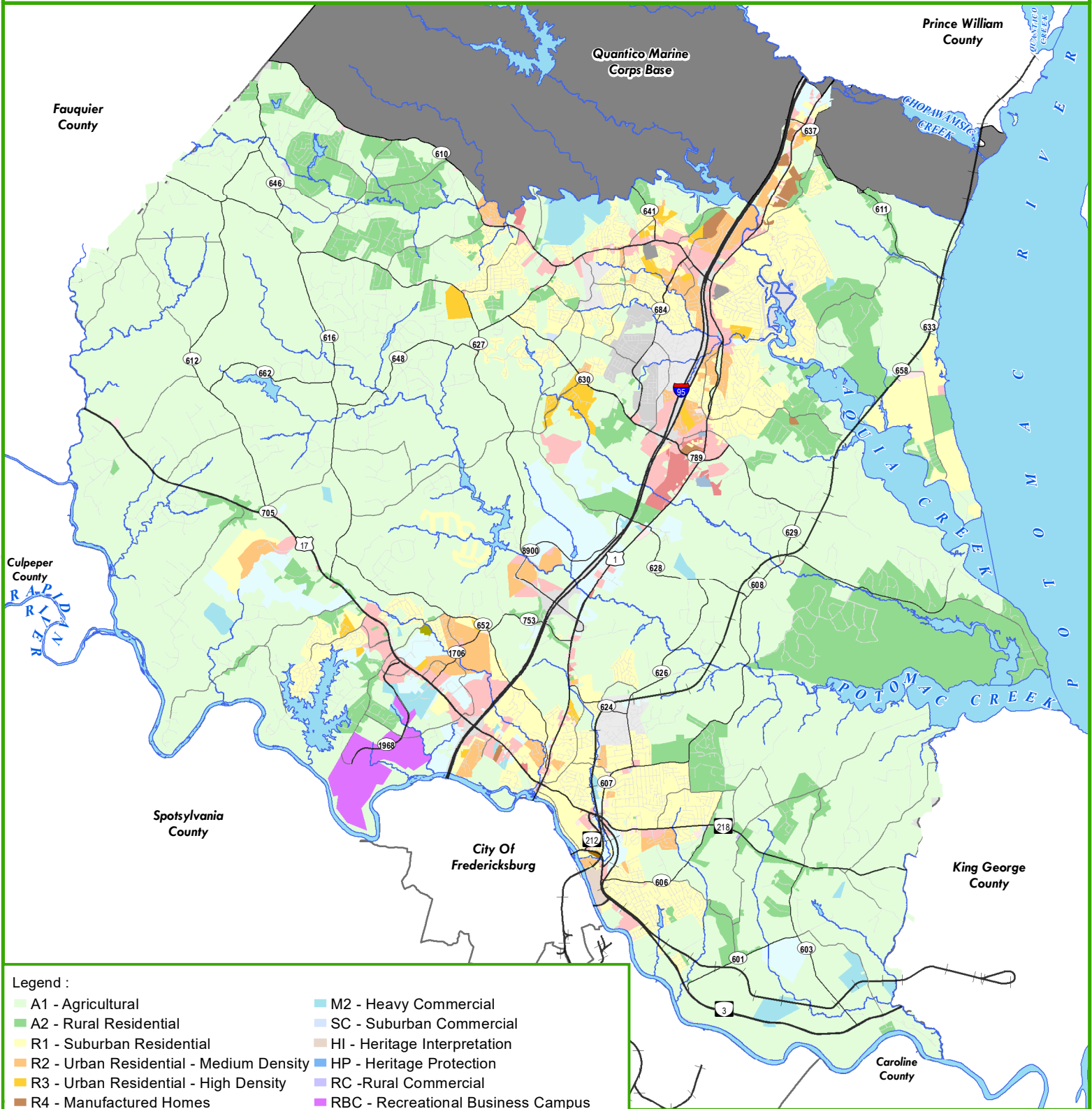


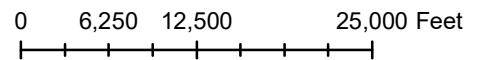


FIGURE 6.2 Zoning Stafford County Comprehensive Plan Stafford County, Virginia September 8, 2021



Legend :

<ul style="list-style-type: none"> ■ A1 - Agricultural ■ A2 - Rural Residential ■ R1 - Suburban Residential ■ R2 - Urban Residential - Medium Density ■ R3 - Urban Residential - High Density ■ R4 - Manufactured Homes ■ R5 - Age-Restricted Housing ■ LC - Life Care/Retirement ■ B1 - Convenience Commercial ■ B2 - Urban Commercial ■ B3 - Office ■ M1 - Light Industrial 	<ul style="list-style-type: none"> ■ M2 - Heavy Commercial ■ SC - Suburban Commercial ■ HI - Heritage Interpretation ■ HP - Heritage Protection ■ RC -Rural Commercial ■ RBC - Recreational Business Campus ■ UD - Urban Development ■ PD1 - Planned Development 1 ■ PD2 - Planned Development 2 ■ PTND - Planned-Traditional Neighborhood ■ QMB - Quantico Marine Base
---	---



Data layers are compiled from various sources and are not to be construed or used as a "legal description." Data layers are believed to be accurate, but accuracy is not guaranteed.