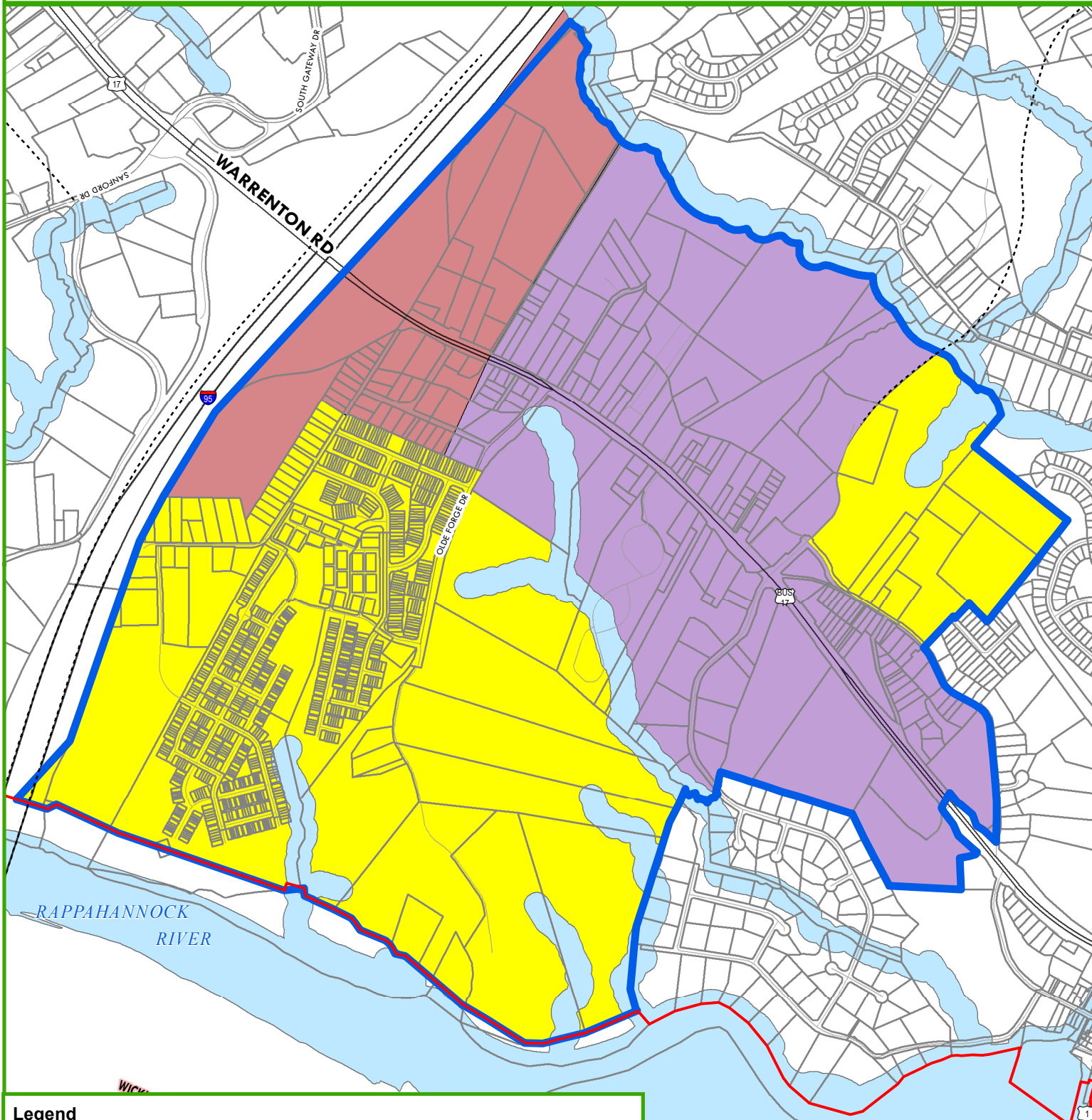
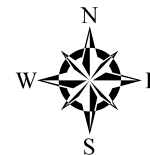




# FIGURE 3.15 Falmouth Gateway Targeted Development Area Stafford County Comprehensive Plan Stafford County, Virginia September 8, 2021



### Legend

Proposed New Roads

Urban Services Area

Targeted Development Areas

### Land Use Classification:

Commercial – Retail and Office

Mixed Use – Commercial/ Residential

Residential

0 600 1,200 2,400 Feet

Data layers are compiled from various sources and are not to be construed or used as a "legal description." Data layers are believed to be accurate, but accuracy is not guaranteed.