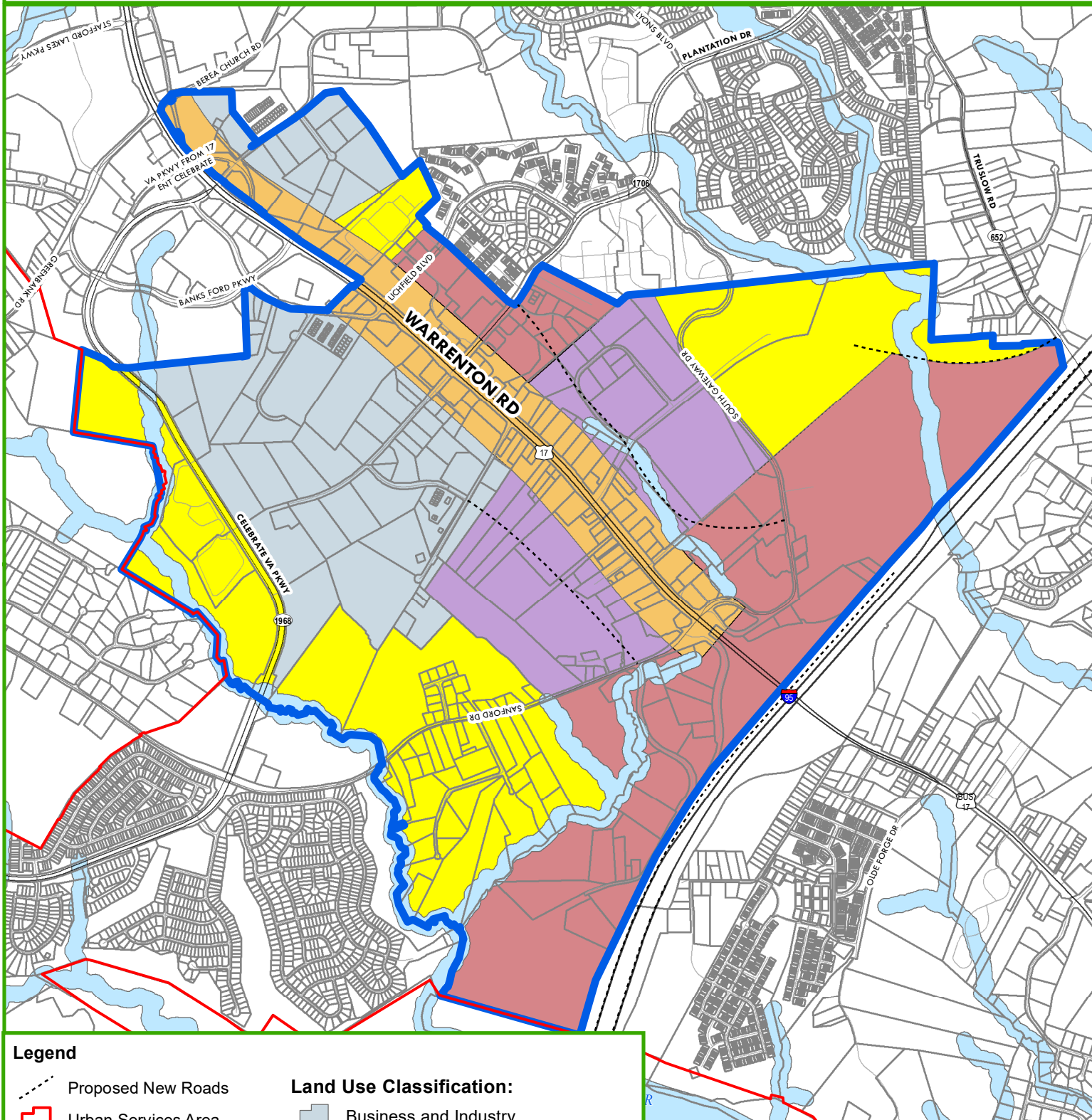
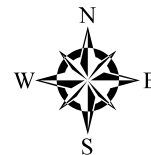




FIGURE 3.14 Berea Targeted Development Area Stafford County Comprehensive Plan Stafford County, Virginia September 8, 2021

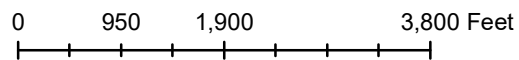


Legend

- Proposed New Roads
- Urban Services Area
- Targeted Development Areas

Land Use Classification:

- Business and Industry
- Commercial – Retail and Office
- Highway Commercial
- Mixed Use – Commercial/ Residential
- Residential



Data layers are compiled from various sources and are not to be construed or used as a "legal description." Data layers are believed to be accurate, but accuracy is not guaranteed.