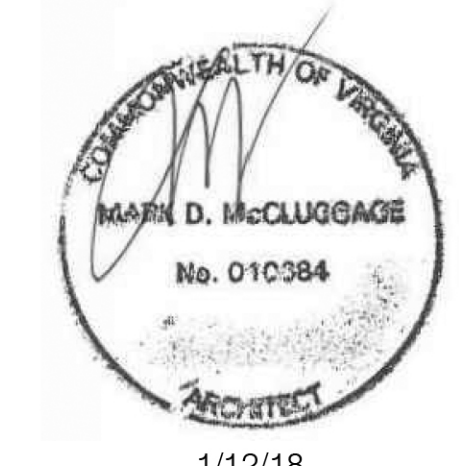




MARK D. MCCLUGGAGE AIA, CCS  
1525 E. Douglas Wichita, KS 67211  
Tel: (316) 265-5646  
www.gfmv.com



1/12/18

13001.17003

- △
- △
- △
- △
- △
- △
- △
- △

CONTRACT DATE: 10.09.2017  
BUILDING TYPE: EXPL LT MED 40  
PLAN VERSION: MAY 2017  
SITE NUMBER: --  
STORE NUMBER: --

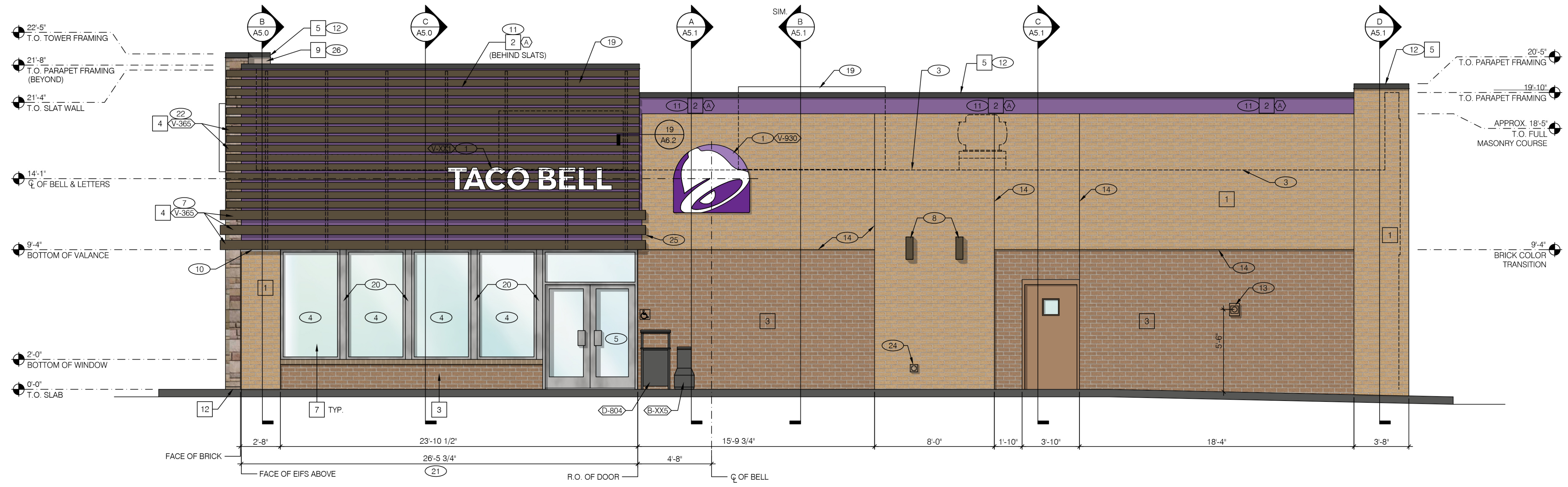
TACO BELL  
TUCKAHOE VILLAGE  
TUCKAHOE, VA



### EXTERIOR ELEVATIONS

# A4.0

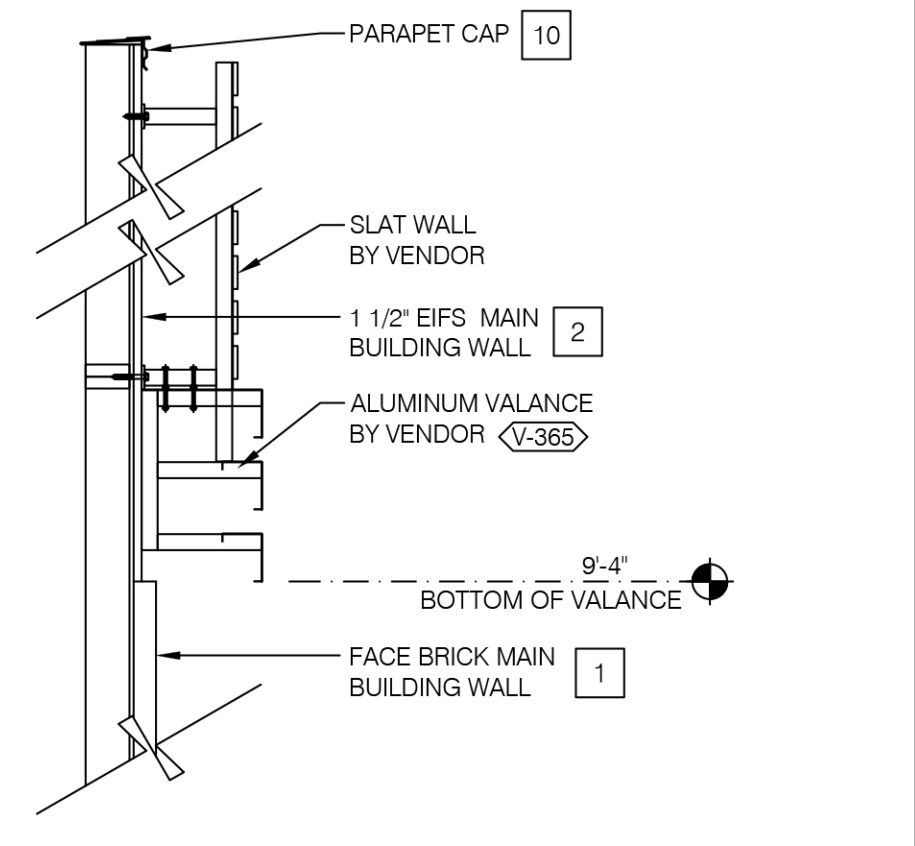
PLOT DATE: 3-07-18



### RIGHT SIDE ELEVATION 1/4"=1'-0" A

- 22'-5" T.O. TOWER FRAMING
- 21'-8" T.O. PARAPET FRAMING (BEYOND)
- 21'-4" T.O. SLAT WALL
- 14'-1" Q OF BELL & LETTERS
- 9'-4" BOTTOM OF VALANCE
- 2'-0" BOTTOM OF WINDOW
- 0'-0" T.O. SLAB

- 20'-5" T.O. PARAPET FRAMING
- 19'-10" T.O. PARAPET FRAMING
- APPROX 18'-5" T.O. FULL MASONRY COURSE
- 9'-4" BRICK COLOR TRANSITION



### SLAT WALL COLOR TRANSITION N.T.S. G

#### MISCELLANEOUS

A. SEE SHT A1.1 "WINDOW TYPES" FOR WINDOW ELEVATIONS.  
B. SEE SCOPE OF WORK FOR RESPONSIBILITIES.  
C. NOT USED.  
D. NOT USED.  
E. E.I.F.S. TEXTURE SHALL BE "FINE".

#### SEALERS (REFER TO SPECS):

A. SEALANT AT ALL WALL AND ROOF PENETRATIONS.  
B. SEALANT AT ALL WINDOW AND DOOR FRAMES AT HEAD AND JAMB. DO NOT SEAL SILL @ WINDOWS.  
C. APPLY NEOPRENE GASKET (CONT.) BETWEEN BUILDING & CANOPY/TRELLIS.

#### E.I.F.S. LEGEND:

NOT USED

#### "CRITICAL" DIMENSIONS:

A. REQUIRED CLEAR OPENING WIDTH TO ENSURE COORDINATION WITH STANDARD SIGNAGE/ BUILDING ELEMENTS DIMENSIONS.  
2. OWNER REPRESENTATIVE WILL IDENTIFY IF LOTUSAN PAINT WILL BE USED.

### GENERAL NOTES F

#### CANOPY AND BLDG. ACCENT SCHED. E

QTY	ITEM DESCRIPTION	ELEC
1	TACO BELL DRIVE THRU CANOPY	X
1	SLAT WALL SYSTEM	
3	TACO BELL CANOPY	X

#### E.I.F.S. THICKNESS B

(A) BASE THICKNESS - 1 1/2" THICK E.I.F.S.

#### SIGN SCHEDULE C

QTY	ITEM DESCRIPTION	ELEC
4	TACO BELL LETTERS 18" HIGH, WHITE, FLAT FACED	X
3	TACO BELL 'BELL' SIGN	X
	LED LAMPING.	

#### EXTERIOR FINISH SCHEDULE H

SYMBOL	AREA	MANUFACTURER	COLOR	ALTERNATE MFR.	ALTERNATE COLOR	CONTACT INFORMATION
1	MAIN BUILDING COLOR	ACME	GOLDEN SUNSET			SHERWIN WILLIAMS: BRAD HARRINGTON, 216-341-5558 X115 (PHONE), BRAD E.HARRINGTON@SHERWIN.COM
2	WALL COLOR BEHIND SCREEN WALL	SHERWIN WILLIAMS	SW 6831 "CLEMATIS"			EIFS CONTACT: STO CORP.: CHUCK DUFFIN, 940-894-2092 (PHONE), 940-894-2095 (FAX), CDUFFIN@STOCORP.COM OWNER REPRESENTATIVE WILL IDENTIFY IF LOTUSAN PAINT WILL BE USED
3	ACCENT COLOR	ACME	CINNAMON BROWN			
4	SLAT WALL AND VALANCE COLOR	VENDOR	SW 7034 "STATUS BRONZE" (EQUAL)			
5	PARAPET CAP COLOR	IB ROOFING SYSTEM	PAINTED SW 7069 "IRON ORE"			
6	STONE WALL	OWENS CORNING / BORAL - VERSETTA STONE	TIGHT CUT - "PLUM CREEK"	CORONADO	IDAHO DRYSTACK, CARMEL MOUNTAIN FULLY TOOLED GROUT	VERSETTA STONE WALL: ASHLEY JOYCE 770-645-4531 ALTERNATE: CORONADO: 1-800-847-8663
7	STOREFRONT WINDOWS	TBD	* CLEAR ANODIZED*			
8	PIPE BOLLARDS	SHERWIN WILLIAMS	SW2541 - ULTRA DEEP PURPLE			
9	PARAPET BACK ROOFING	IB ROOFING SYSTEM	THE COLOR SHALL BE FACTORY COLORED "TAN." EQUAL ALTERNATE ALLOWED.			
10	DOWNSPOUTS AND GAS PIPING	SHERWIN WILLIAMS	MATCH BRICK			
11	ACCENT COLOR	ACME	CINNAMON BROWN, VELOUR TEXTURE			
12	STO GUARD TRANSITION MEMBRANE #81342	STO CORP.				

- 1 BUILDING SIGN, SEE SCOPE OF WORK.
- 2 DRIVE THRU WINDOW. SEE SHEET A1.0 AND A1.1.
- 3 ROOF BEYOND.
- 4 STOREFRONT TYPICAL.
- 5 DOUBLE DOOR.
- 6 SWITCH GEAR. PAINT TO MATCH WALL.
- 7 ARCHITECTURAL ALUMINUM VALANCE BY VENDOR.
- 8 LIGHT SCONCE. ALIGN BOTTOM OF FIXTURES MOUNTING BRACKET WITH CHANGE IN BRICK COLOR.
- 9 ASSUME D/T LANE SURFACE IS 6" BELOW THE FINISH FLOOR, REFER TO GRADING & SITE PLAN.
- 10 FACE BRICK TO TERMINATE AT TOP OF WINDOW HEIGHT. FLASHING BETWEEN EIFS AND BRICK TOP.
- 11 1 1/2" THICK EIFS (TYP.).
- 12 PARAPET COPING. USE THE IB ROOFING SYSTEM PRE-FINISHED EDGE TRIM. SEE DETAIL 2/A6.0.
- 13 CO2 FILLER VALVE & COVER. SEE DETAIL 5/A6.2 SIM.
- 14 BRICK COLOR CHANGE &/OR CONTROL JOINT.
- 15 GAS SERVICE- DO NOT PAINT METER.
- 16 WALL SHALL BE FINISHED PRIOR TO INSTALLATION OF SWITCHGEAR.
- 17 ROOF DRAIN PIPED TO UNDERGROUND STORM SEWER. SEE D/A3.0 AND CIVIL DWGS.
- 18 NOT USED.
- 19 RTU BEYOND. PAINT TO MATCH MAIN BUILDING COLOR.
- 20 BRAKE METAL COVER OVER WOOD STUDS TO MATCH STOREFRONT. SEE 3, 8 & 12/A6.1
- 21 SIGN VENDOR HOLD-TO G.C. SHALL ENSURE THIS DIM. IS EXACTLY AS NOTED TO ENSURE PROPER FIT OF VENDOR SUPPLIED VALANCE AND SLAT SYSTEM.
- 22 ALUMINUM SLAT WALL BY VENDOR.
- 23 BOLLARD.
- 24 HOSE BIBB. SEE DETAIL 8/A6.2.
- 25 RETURN ALUMINUM LOUVERS BACK TO FACE OF BUILDING.
- 26 IB ROOFING MEMBRANE OVER 1/2" EXTERIOR GRADE PLYWD.

- #### KEY NOTES D

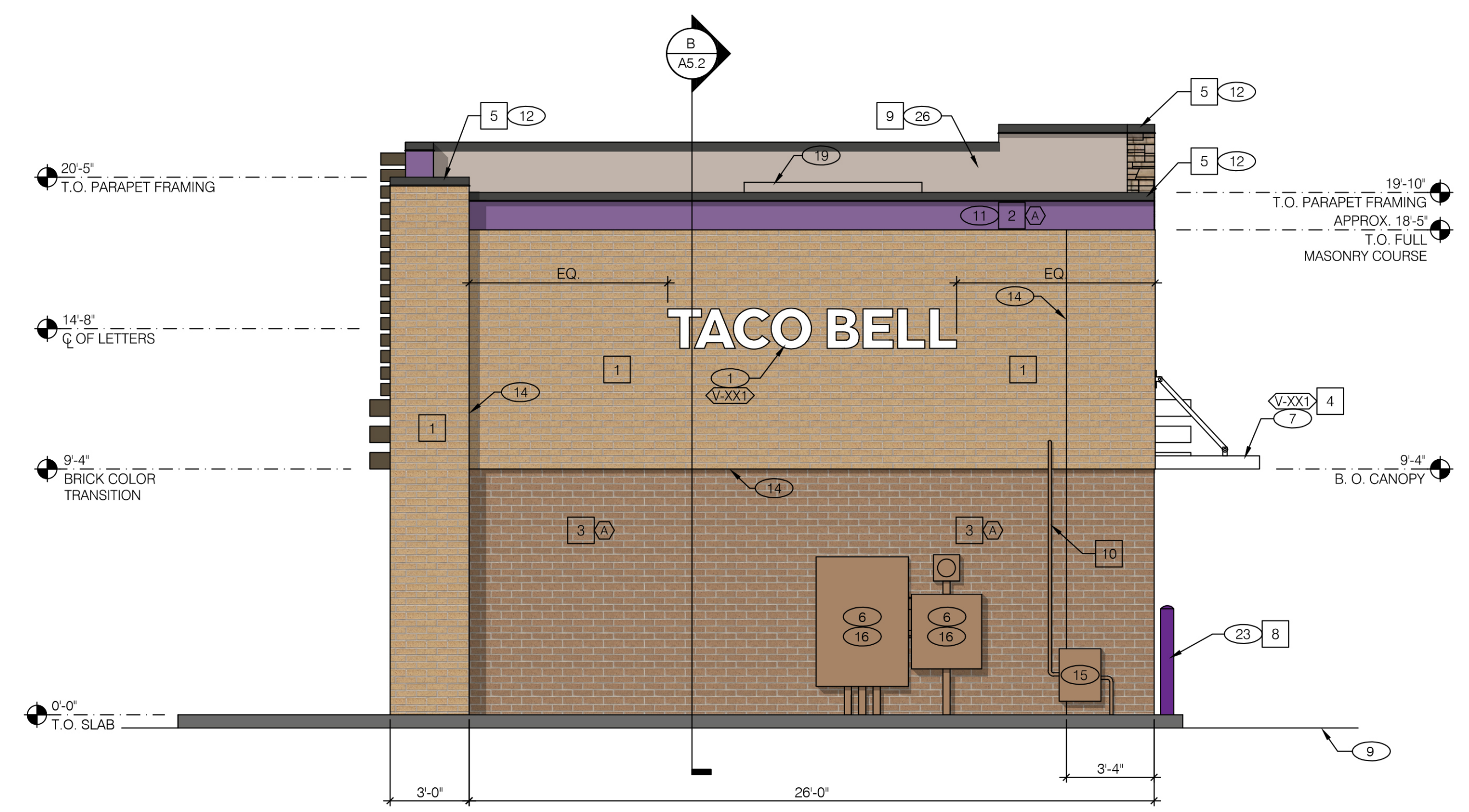


SEE SHEET A4.0 FOR KEYNOTES.

**LEFT SIDE ELEVATION** 1/4" = 1'-0" **A**



**FRONT ELEVATION** 1/4" = 1'-0" **C**



**REAR ELEVATION** 1/4" = 1'-0" **B**


  
 MARK D. MCCLUGGAGE AIA, CCS
   
 1525 E. Douglas Wichita, KS 67211
   
 Fax: (316) 265-5646
   
 www.gimv.com


  
 1/12/18

13001.17003

- △
- △
- △
- △
- △
- △
- △
- △
- △
- △

CONTRACT DATE: 10.09.2017  
 BUILDING TYPE: EXPL LT MED 40  
 PLAN VERSION: MAY 2017  
 SITE NUMBER: --  
 STORE NUMBER: --

TACO BELL  
 TUCKAHOE VILLAGE  
 TUCKAHOE, VA


  
 EXPLORER LITE  
 MEDIUM 40

**EXTERIOR ELEVATIONS**

**A4.1**

PLOT DATE: 3-07-18