



studioNorth
ARCHITECTURE
4825 NW 41st Street | Suite 500 | Riverside, MD 64150
816 | 888 | 7380
NP Studio North, LLC
Virginia Certificate of Registration

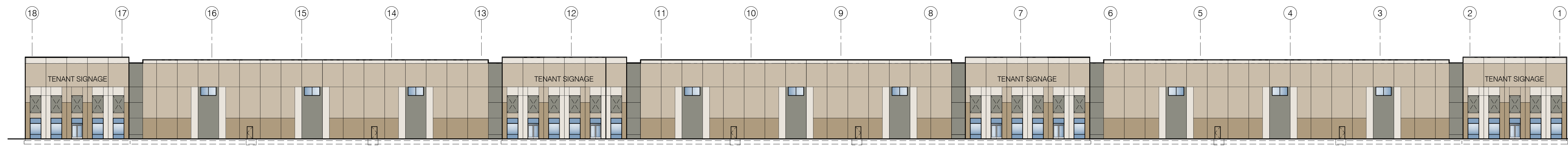
COLOR COATING LEGEND

1. ALL PAINT COLOR TRANSITIONS SHALL OCCUR AT INSIDE CORNERS IN VALLEY OF REVEALS. RE: REVEAL DETAILS ON A5.01.
2. COPING COLORS TO MATCH ADJACENT PAINT FINISH AS NOTED BELOW (U.N.O.)

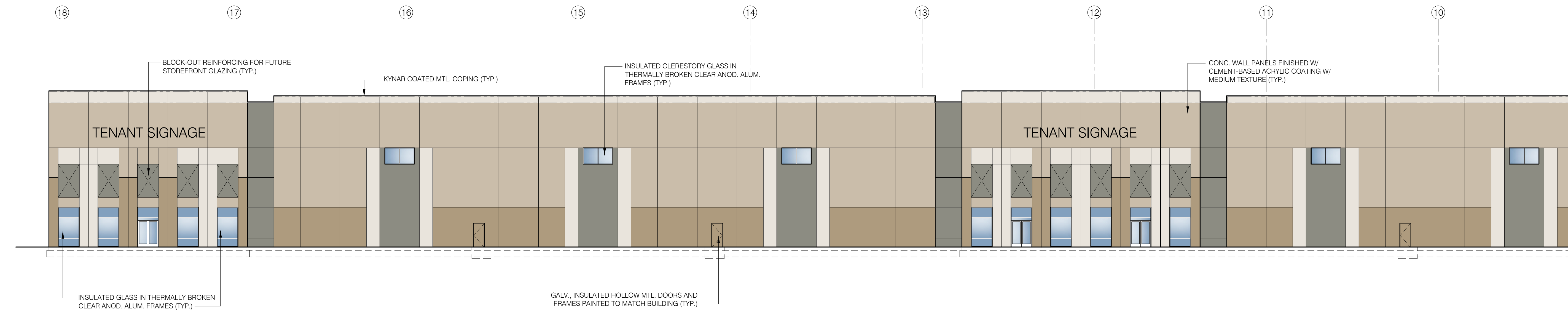
- SHERWIN WILLIAMS: SW7043 'WORLDLY GRAY'
COPING COLOR: EQ. TO PAC-CLAD 'SANDSTONE'
- SHERWIN WILLIAMS: SW7038 'TONY TAUPE'
COPING COLOR: EQ. TO PAC-CLAD 'SIERRA TAN'
- SHERWIN WILLIAMS: SW 7018 'DOVETAIL'
COPING COLOR: EQ. TO PAC-CLAD 'SLATE GRAY'
- SHERWIN WILLIAMS: SW7046 'ANONYMOUS'

GUTTERS & DOWNSPOUTS TO MATCH SW70238 'TONY TAUPE' (EQ. TO PAC-CLAD 'SIERRA TAN')

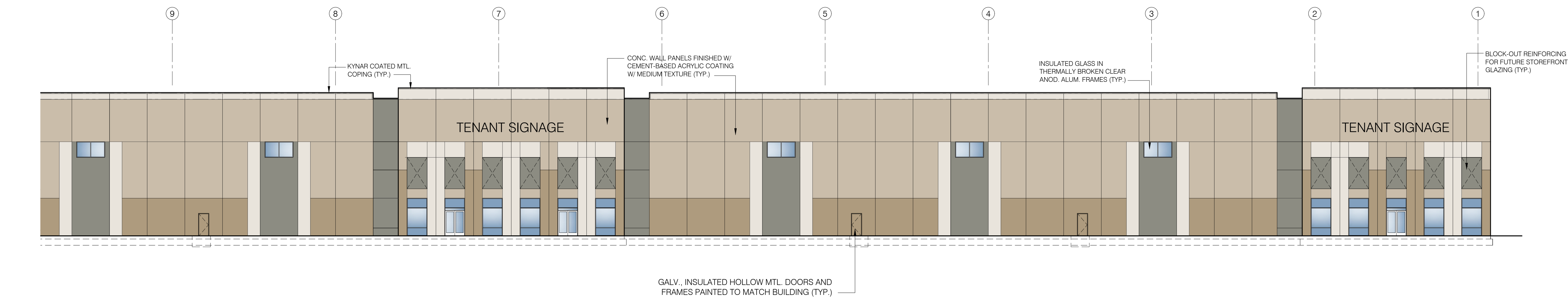
CONDUCTOR HEADS AND DOWNSPOUTS TO MATCH S7018 'DOVETAIL' (EQ. TO PAC-CLAD 'SLATE GRAY')



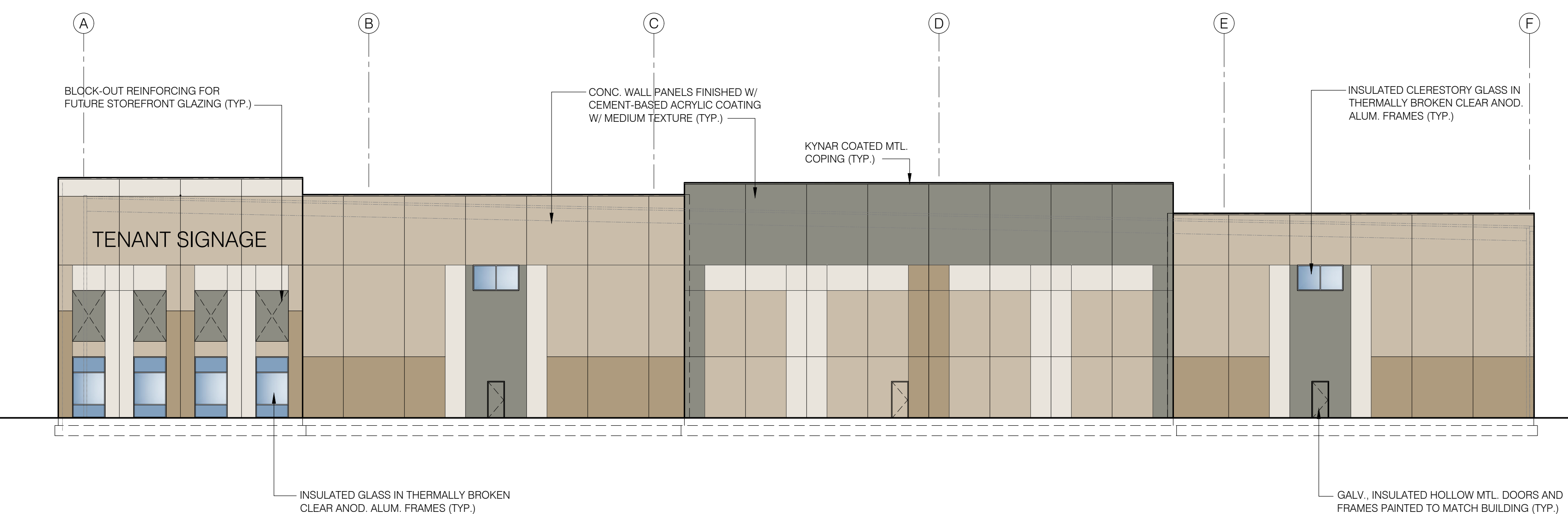
1 OVERALL FRONT ELEVATION
Scale: 1/16" = 1'-0"



2 PARTIAL FRONT ELEVATION
Scale: 1/16" = 1'-0"



3 PARTIAL FRONT ELEVATION
Scale: 1/16" = 1'-0"



4 END ELEVATION
Scale: 1/16" = 1'-0"



Austin Ridge
Logistics Center
Stafford County, VA

Rear-Load Prototype

Project No. 2022-062

Date: 03.28.2022

Issued For: REZONING APPLICATION

Revisions:

No.	Date	Description

Preliminary
Not For Construction

Ronald Dean Schaeuecker - Architect
Virginia License No. 0401018350

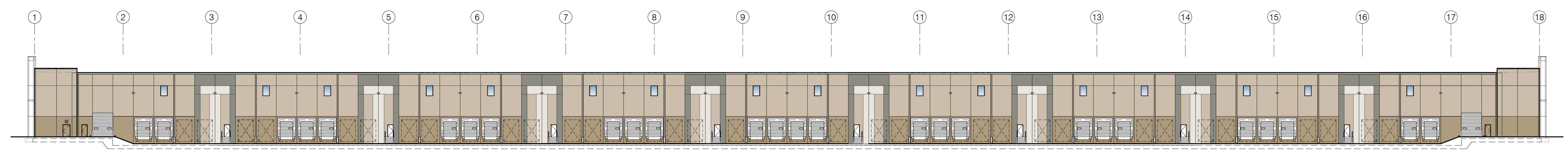
A4.01
BUILDING ELEVATIONS



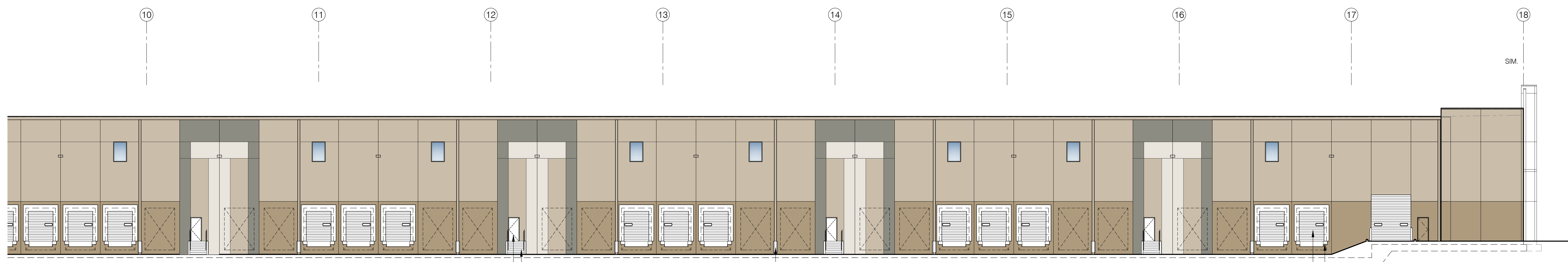
studioNorth
ARCHITECTURE
4825 NW 41st Street | Suite 500 | Riverside, MD 64150
816 | 888 | 7380
NP Studio North, LLC
Virginia Certificate of Registration

COLOR COATING LEGEND

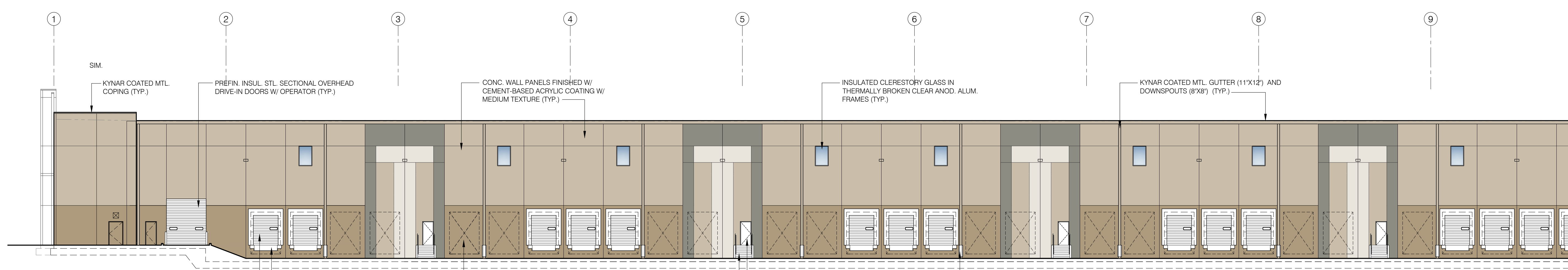
- ALL PAINT COLOR TRANSITIONS SHALL OCCUR AT INSIDE CORNERS IN VALLEY OF REVEALS. RE - REVEAL DETAILS ON A5.01. COPING COLORS TO MATCH ADJACENT PAINT FINISH AS NOTED BELOW (U.N.O.)
 - SHERWIN WILLIAMS: SW7043 'WORLDLY GRAY' COPING COLOR: EQ. TO PAC-CLAD 'SANDSTONE'
 - SHERWIN WILLIAMS: SW7038 'TONY TAUPE' COPING COLOR: EQ. TO PAC-CLAD 'SIERRA TAN'
 - SHERWIN WILLIAMS: SW 7018 'DOVETAIL' COPING COLOR: EQ. TO PAC-CLAD 'SLATE GRAY'
 - SHERWIN WILLIAMS: SW7046 'ANONYMOUS'
- GUTTERS & DOWNSPOUTS TO MATCH SW70238 'TONY TAUPE' (EQ. TO PAC-CLAD 'SIERRA TAN')
- CONDUCTOR HEADS AND DOWNSPOUTS TO MATCH S7018 'DOVETAIL' (EQ. TO PAC-CLAD 'SLATE GRAY')



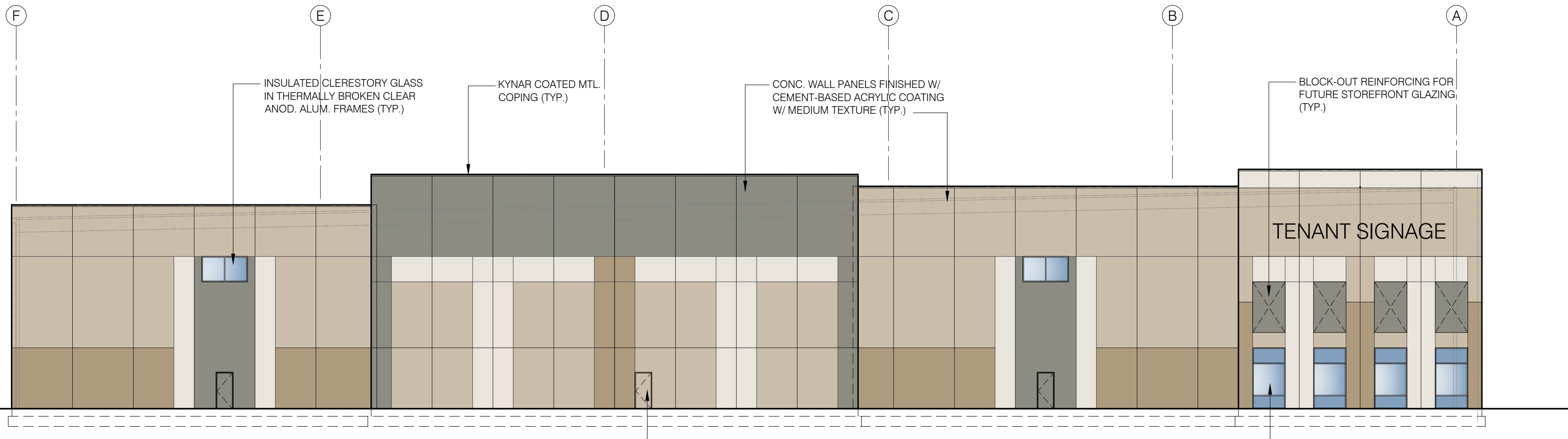
1 OVERALL REAR ELEVATION
Scale: 1/16" = 1'-0"



2 PARTIAL REAR ELEVATION
Scale: 1/16" = 1'-0"



1 PARTIAL REAR ELEVATION
Scale: 1/16" = 1'-0"



4 END ELEVATION
Scale: 1/16" = 1'-0"

GALV. INSULATED HOLLOW MTL. DOORS AND FRAMES PAINTED TO MATCH BUILDING (TYP.)
GALVANIZED STEEL STAIRS, GUARDRAILS AND HANDRAILS (TYP.)
3/8"x36"x42"H GALV. STEEL BENT PLATE D.S. PROTECTION (TYP. - REF. WALL SECTIONS)
MANUAL PREFIN. INSUL. STL. SECTIONAL OVERHEAD DOCK DOORS W/ LEVELERS
DOCK EQUIPPED W/ HYDRAULIC PIT LEVELERS, DOCK BUMPERS, DOCK SHELTERS, DOCK LOCKS/LIGHTS AND WHEEL CHOCKS

MANUAL PREFIN. INSUL. STL. SECTIONAL OVERHEAD DOCK DOORS W/ LEVELERS
DOCK EQUIPPED W/ HYDRAULIC PIT LEVELERS, DOCK BUMPERS, DOCK SHELTERS, DOCK LOCKS/LIGHTS AND WHEEL CHOCKS
BLOCK-OUT REINFORCING FOR FUTURE OVERHEAD DOCK DOOR (9x10' TYP.)
GALVANIZED STEEL STAIRS, GUARDRAILS AND HANDRAILS (TYP.)
GALV. INSULATED HOLLOW MTL. DOORS AND FRAMES PAINTED TO MATCH BUILDING (TYP.)
3/8"x36"x42"H GALV. STEEL BENT PLATE D.S. PROTECTION (TYP. - REF. WALL SECTIONS)

INSULATED CLERESTORY GLASS IN THERMALLY BROKEN CLEAR ANOD. ALUM. FRAMES (TYP.)
KYNAR COATED MTL. COPING (TYP.)
CONC. WALL PANELS FINISHED W/ CEMENT-BASED ACRYLIC COATING W/ MEDIUM TEXTURE (TYP.)
BLOCK-OUT REINFORCING FOR FUTURE STOREFRONT GLAZING (TYP.)

GALV. INSULATED HOLLOW MTL. DOORS AND FRAMES PAINTED TO MATCH BUILDING (TYP.)
INSULATED GLASS IN THERMALLY BROKEN CLEAR ANOD. ALUM. FRAMES (TYP.)

TENANT SIGNAGE

N:\01 PROJECTS\AUSTIN RIDGE LOGISTICS CENTER\BUILDING 2\CAD_PROJECT\A4.02_ARCH\A4.02_ARCH.dwg 3/29/2022 12:51:21 PM rschauwecker



Austin Ridge
Logistics Center
Stafford County, VA
Rear-Load Prototype

Project No. 2022-062
Date: 03.28.2022
Issued For: REZONING APPLICATION

Revisions:

No.	Date	Description

Preliminary
Not For Construction

Ronald Dean Schauwecker - Architect
Virginia License No. 0401018350