

Warrenton Road
Stafford County
Virginia

SHEETZ, INC.

5700 SIXTH AVE.
ALTOONA, PA 16602



- 1 BRICK VENEER
- 2 CAST STONE SILL
- 3 ANCHORED CAST STONE MASONRY VENEER
- 4 EXTERIOR LIGHT FIXTURE
- 5 ARCHITECTURAL CANOPY
- 6 BRICK PAVER WALKWAY
- 7 LIGHTED BOLLARD
- 8 METAL COPING
- 9 WALL MOUNTED BUILDING SIGN
- 10 STANDING SEAM METAL ROOF
- 11 ROOF EQUIPMENT SCREEN (
- 12 GUTTER
- 13 DOWNSPOUT
- 14 DRIVE-THRU WINDOW
- 15 METAL STANDING SEAM AWNING
- 16 BRICK SOLDIER COURSE
- 17 BRICK ROWLOCK COURSE
- 18 CONTROL JOINT
- 19 STEEL ROOF LADDER
- 20 STANDARD THROUGH WALL SCUPPER W/ CONDUCTOR HEAD & DOWNSPOUT
- 21 OVERFLOW SCUPPER
- 22 ALUMINUM STOREFRONT SYSTEM
- 23 EXTERIOR HOSE BIB
- 24 OUTDOOR FURNITURE
- 25 ELECTRICAL RECEPTACLE
- 26 ELECTRICAL EQUIPMENT
- 27 HM DOOR AND FRAME
- 28 EMERGENCY WATER CONNECTION
- 29 SEAMLESS ALUM. PANEL SYSTEM W/ EXPOSED FASTENERS -
- 30 PROPANE LOCKER
- 31 ICE MERCHANDISER
- 32 RTI FILLPORT
- 33 STEEL BOLLARD
- 34 CO2 FILLPORT
- 35 DECORATIVE ALUMINUM FENCE

[illegible]

SUE:	05.10.2023
TE ID NO:	214390
UTHOR BY:	RJK
REVIEW BY:	NMV
VERSION:	6879_v1.4

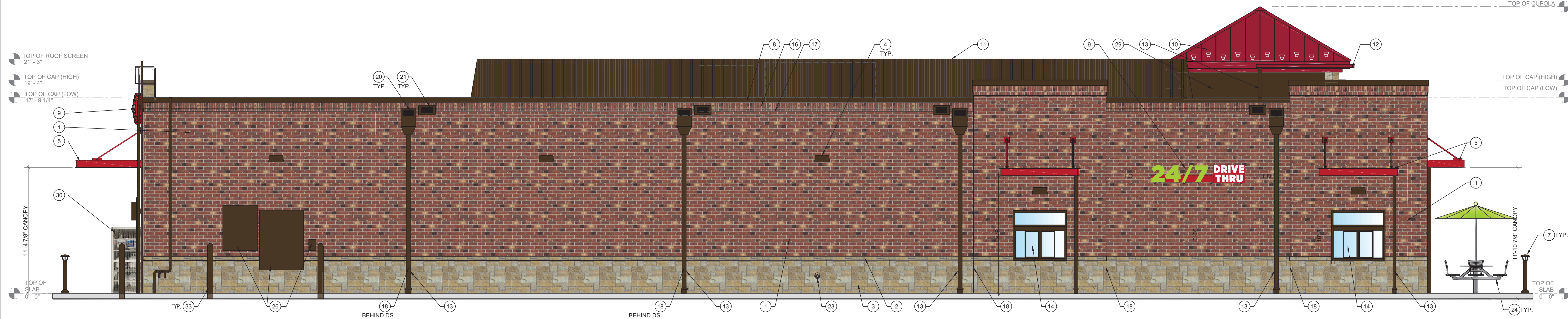
ILLUSTRATIVE BUILDING ELEVATIONS

PROJECT NAME:
**SHEETZ ON
WARRENTON ROAD**

Warrenton Road
Stafford County
Virginia

SHEETZ, INC.

5700 SIXTH AVE.
ALTOONA, PA 16602



3 REAR ELEVATION
1/4" = 1'-0"

EXTERIOR ELEVATION KEYNOTES:

- 1 BRICK VENEER
- 2 CAST STONE SILL
- 3 ANCHORED CAST STONE MASONRY VENEER
- 4 EXTERIOR LIGHT FIXTURE,
- 5 ARCHITECTURAL CANOPY
- 6 BRICK PAVER WALKWAY
- 7 LIGHTED BOLLARD
- 8 METAL COPING
- 9 WALL MOUNTED BUILDING SIGN,
- 10 STANDING SEAM METAL ROOF
- 11 ROOF EQUIPMENT SCREEN
- 12 GUTTER
- 13 DOWNSPOUT
- 14 DRIVE-THRU WINDOW
- 15 METAL STANDING SEAM SHED STYLE AWNING AND FRAME ASSEMBLY
- 16 BRICK SOLDIER COURSE
- 17 BRICK ROWLOCK COURSE
- 18 CONTROL JOINT
- 19 STEEL ROOF LADDER AND CRANKY POST
- 20 STANDARD THROUGH WALL SCUPPER W/ CONDUCTOR HEAD & DOWNSPOUT
- 21 OVERFLOW SCUPPER
- 22 ALUMINUM STOREFRONT SYSTEM
- 23 EXTERIOR HOSE BIB
- 24 OUTDOOR FURNITURE
- 25 ELECTRICAL RECEPTACLE
- 26 ELECTRICAL EQUIPMENT
- 27 HM DOOR AND FRAME
- 28 EMERGENCY WATER CONNECTION
- 29 SEAMLESS ALUM. PANEL SYSTEM W/ EXPOSED FASTENERS -
- 30 PROPANE LOCKER
- 31 ICE MERCHANDISER
- 32 RTI FILLPORT
- 33 STEEL BOLLARD
- 34 CO2 FILLPORT
- 35 DECORATIVE ALUMINUM FENCE



4 RIGHT ELEVATION



KEYPLAN

ISSUE: **05.10.2023**
SITE ID NO: **214390**
AUTHOR BY: **RJK**
REVIEW BY: **NMV**
VERSION: **6879_v1.4**

ILLUSTRATIVE
BUILDING
ELEVATIONS

PROJECT NAME

**SHEETZ ON
WARRENTON ROAD**

OWNER:

SHEETZ, INC.

5700 SIXTH AVE.
ALTOONA, PA 16602

CONSULTANT

PROFESSIONAL

KEYPLAN



ISSUE: 05-10-23

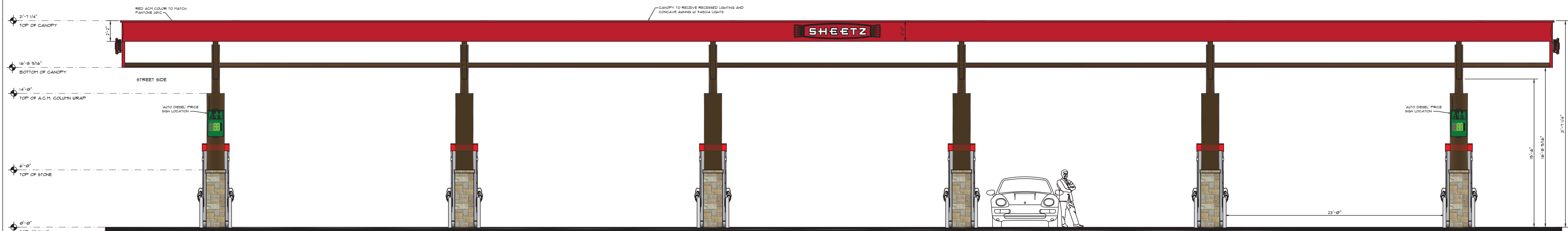
PROJECT NO:

AUTHOR BY: NMI

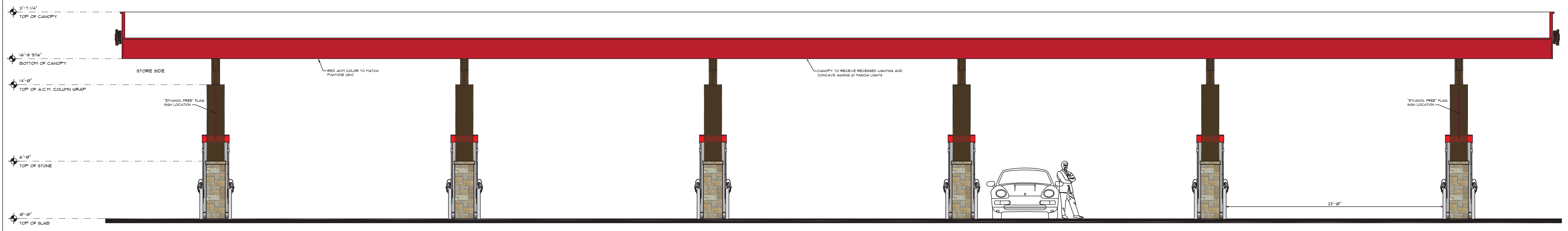
REVIEW BY:

SHEET TITLE

**GAS AWNING
CONCAVE FASCIA**



SIDE 'B' ELEVATION
SCALE: 3/16" = 1'-0"



SIDE 'D' ELEVATION
SCALE: 3/16" = 1'-0"

COLUMN ELEVATION
SCALE: 1/2" = 1'-0"

10"X 10"X 5/16" STEEL
TUBE WRAPPED WITH
DARK BRONZE A.C.M.

1'-10"

DARK BRONZE ACH
TO MATCH
PANTONE 491C

STONE BASE TO MATCH
STONE ON STORE

6'-0"

23'-0"

15'-1 1/4"

14'-0"

6'-0"

0'-0"

15'-1 1/4"

14'-0"

6'-0"

0'-0"

15'-1 1/4"

14'-0"

6'-0"

0'-0"

15'-1 1/4"

14'-0"

6'-0"

0'-0"

15'-1 1/4"

14'-0"

6'-0"

0'-0"

15'-1 1/4"

14'-0"

6'-0"

0'-0"

15'-1 1/4"

14'-0"

6'-0"

0'-0"

15'-1 1/4"

14'-0"

6'-0"

0'-0"

15'-1 1/4"

14'-0"

6'-0"

0'-0"

15'-1 1/4"

14'-0"

6'-0"

0'-0"

15'-1 1/4"

14'-0"

6'-0"

0'-0"

15'-1 1/4"

14'-0"

6'-0"

0'-0"

15'-1 1/4"

14'-0"

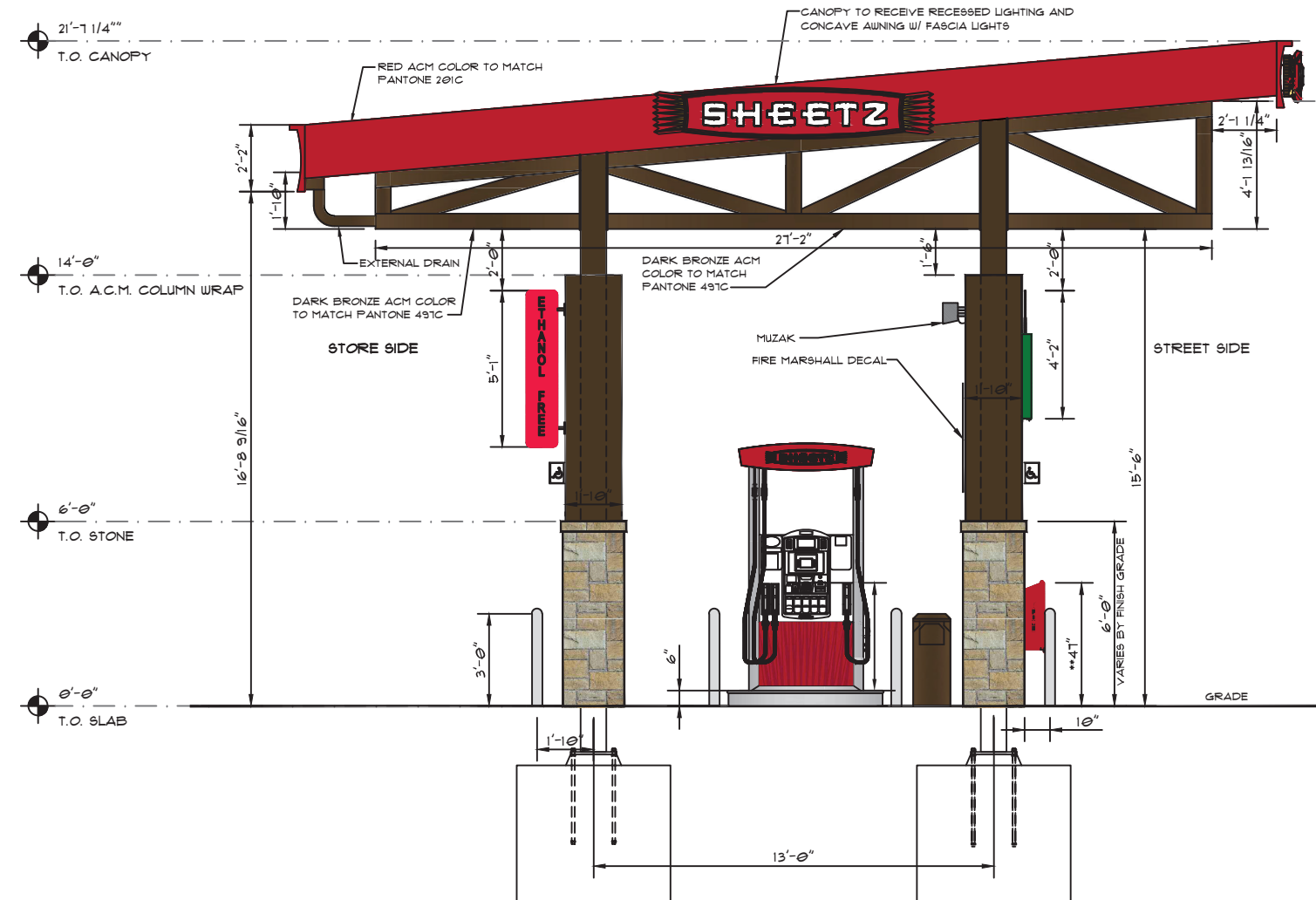
6'-0"

0'-0"

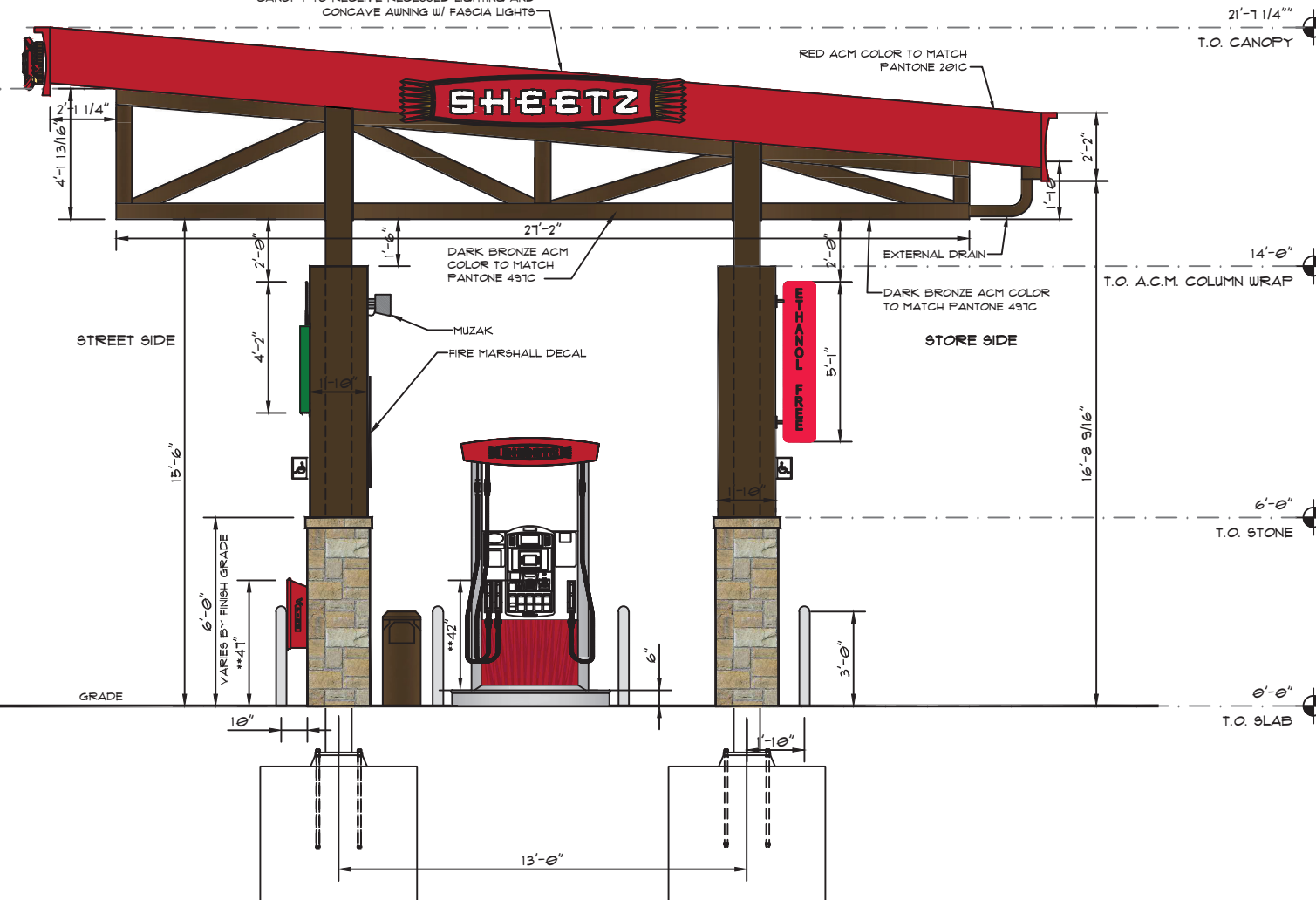


15.31 SQ. FT. BOX AREA
13.23 SQ. FT. OUTLINE AREA
TYPICAL OF THREE
SIGN IS INTERNALLY ILLUMINATED
& FIN-MOUNTED TO CURVED AWNING

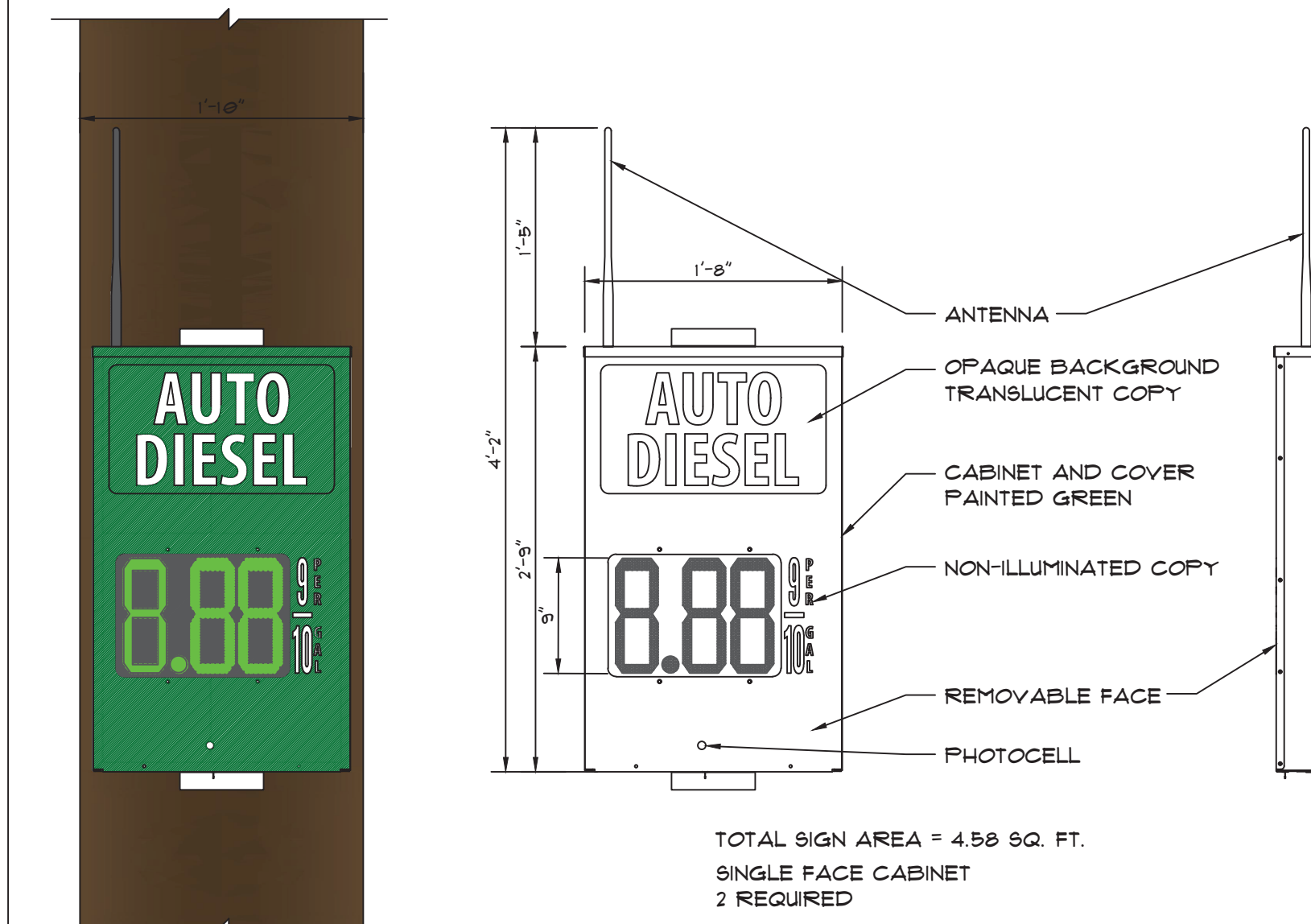
CANOPY MOUNTED SHEETZ SIGN DETAIL
SCALE: 1/2" = 1'-0"



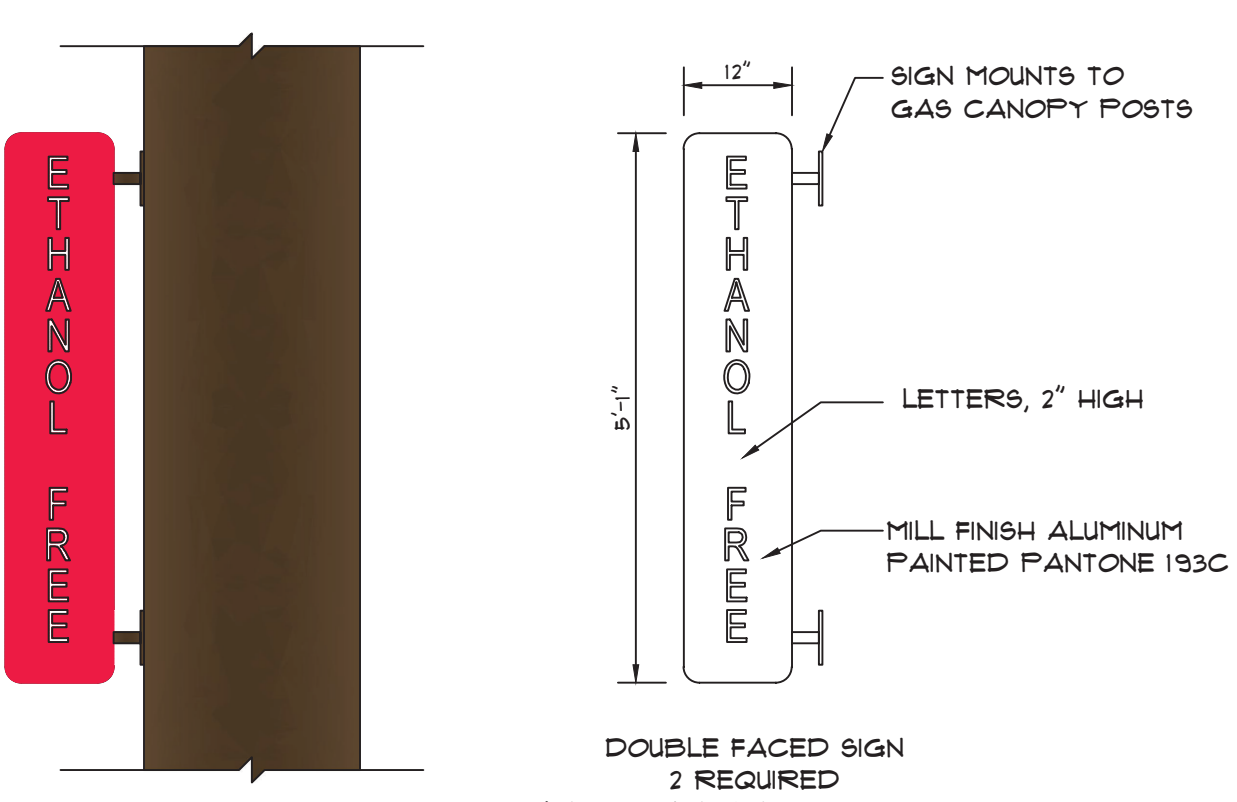
SIDE 'A' LEFT SIDE ELEVATION
SCALE: 3/16" = 1'-0"



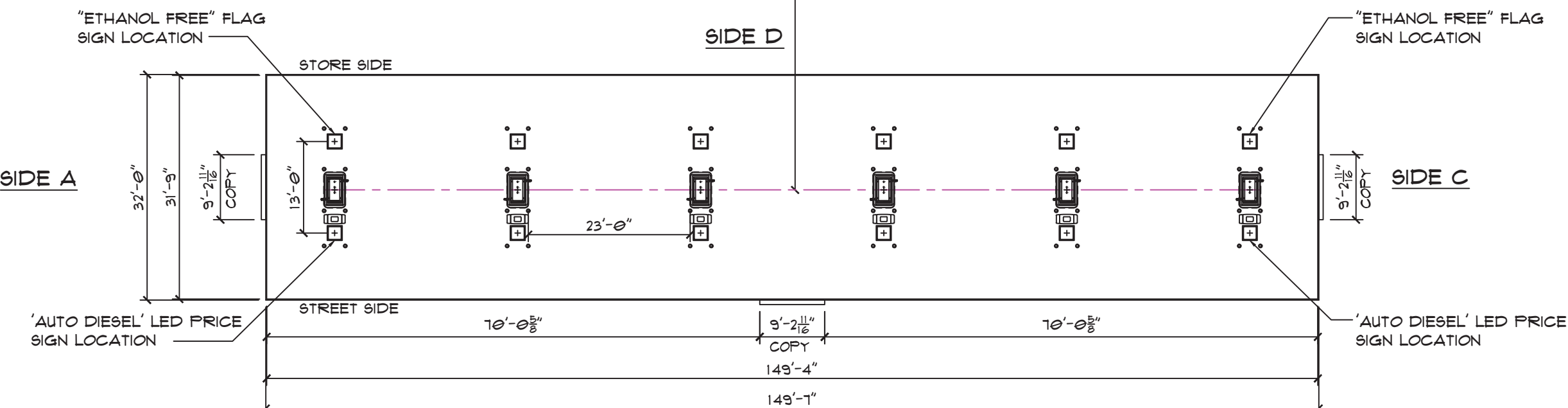
SIDE 'C' RIGHT SIDE ELEVATION
SCALE: 3/16" = 1'-0"



"AUTO DIESEL" PRICE SIGN ELEVATION AND DETAIL
SCALE: 1/4" = 1'-0"



"ETHANOL FREE" FLAG SIGN ELEVATION AND DETAIL
SCALE: 1/4" = 1'-0"



PLAN VIEW FOR LOGO LOCATIONS

700 SIXTH AVE.
ALTOONA, PA 16602

EYPLAN

DATE:	05-10-23
PROJECT NO:	
AUTHOR BY:	NMI
VIEW BY:	
SHEET TITLE	

4

