



FIGURE 3.6
Future Land Use
Stafford County Comprehensive Plan
Stafford County, Virginia
April 27, 2016

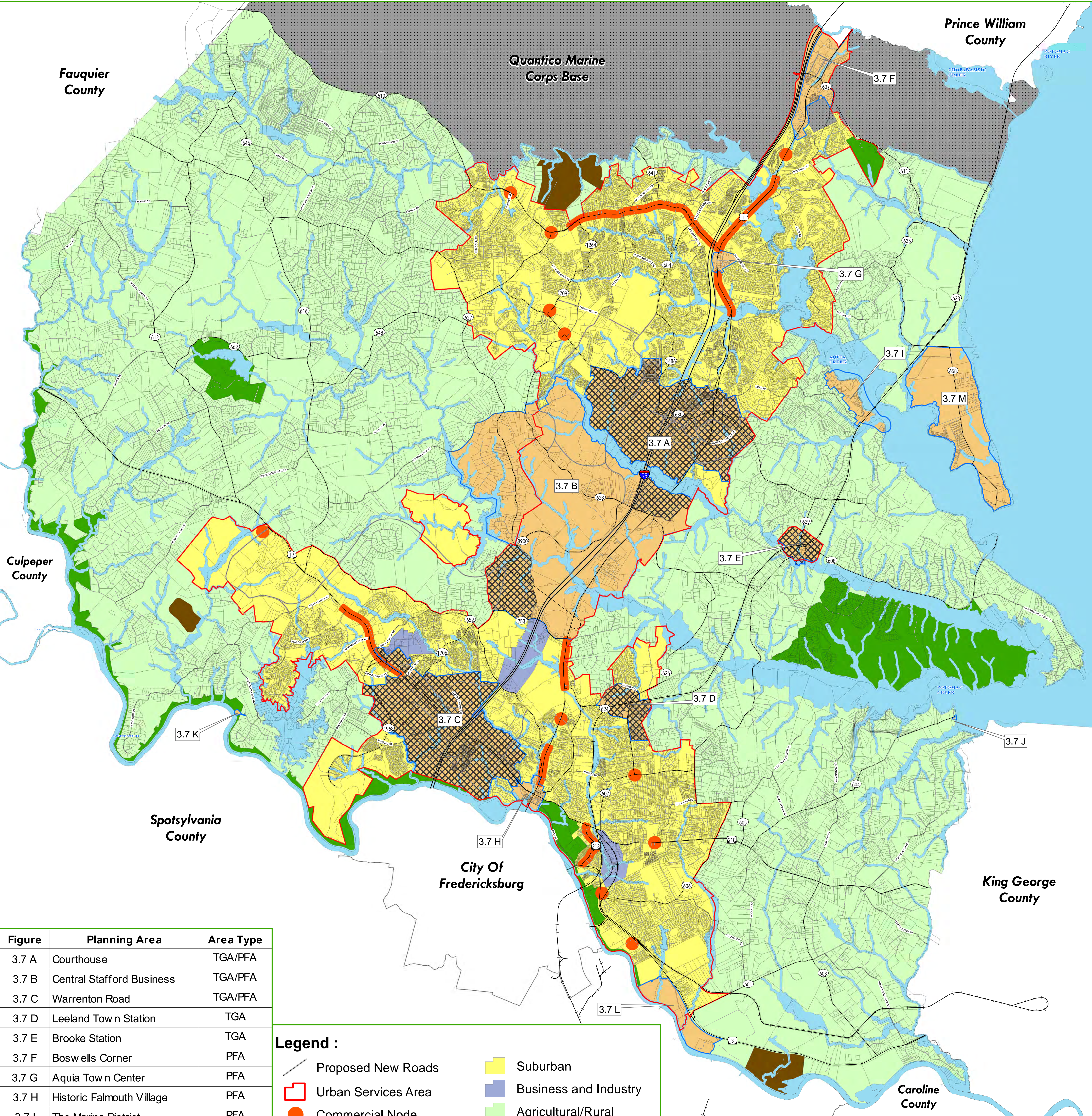
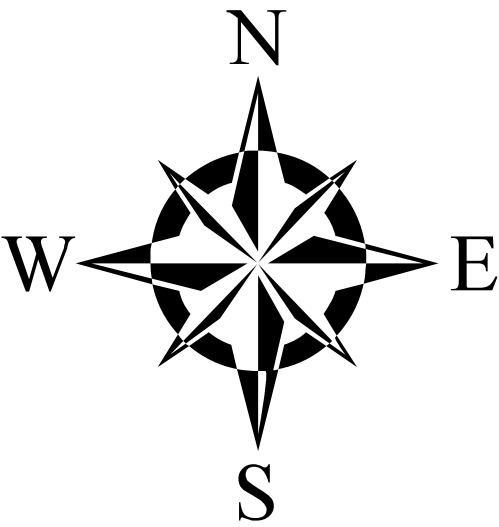


Figure	Planning Area	Area Type
3.7 A	Courthouse	TGA/PFA
3.7 B	Central Stafford Business	TGA/PFA
3.7 C	Warrenton Road	TGA/PFA
3.7 D	Leeland Tow n Station	TGA
3.7 E	Brooke Station	TGA
3.7 F	Bosw ells Corner	PFA
3.7 G	Aquia Tow n Center	PFA
3.7 H	Historic Falmouth Village	PFA
3.7 I	The Marina District	PFA
3.7 J	Potomac Landing	PFA
3.7 K	Old Banks Recreation	PFA
3.7 L	Rappahannock Recreation	PFA
3.7 M	Widew ater	PFA
TGA: Targeted Growth Area		
PFA: Priority Focus Area		

Legend :

Proposed New Roads

Urban Services Area

Commercial Node

Commercial Corridors

Planning Areas

Targeted Residential Growth in Planning Areas

Suburban

Business and Industry

Agricultural/Rural

Mining

Federal

Resource Protection

Parks

0 5,000 10,000 20,000 Feet

Data layers are compiled from various sources and are not to be construed or used as a "legal description." Data layers are believed to be accurate, but accuracy is not guaranteed.