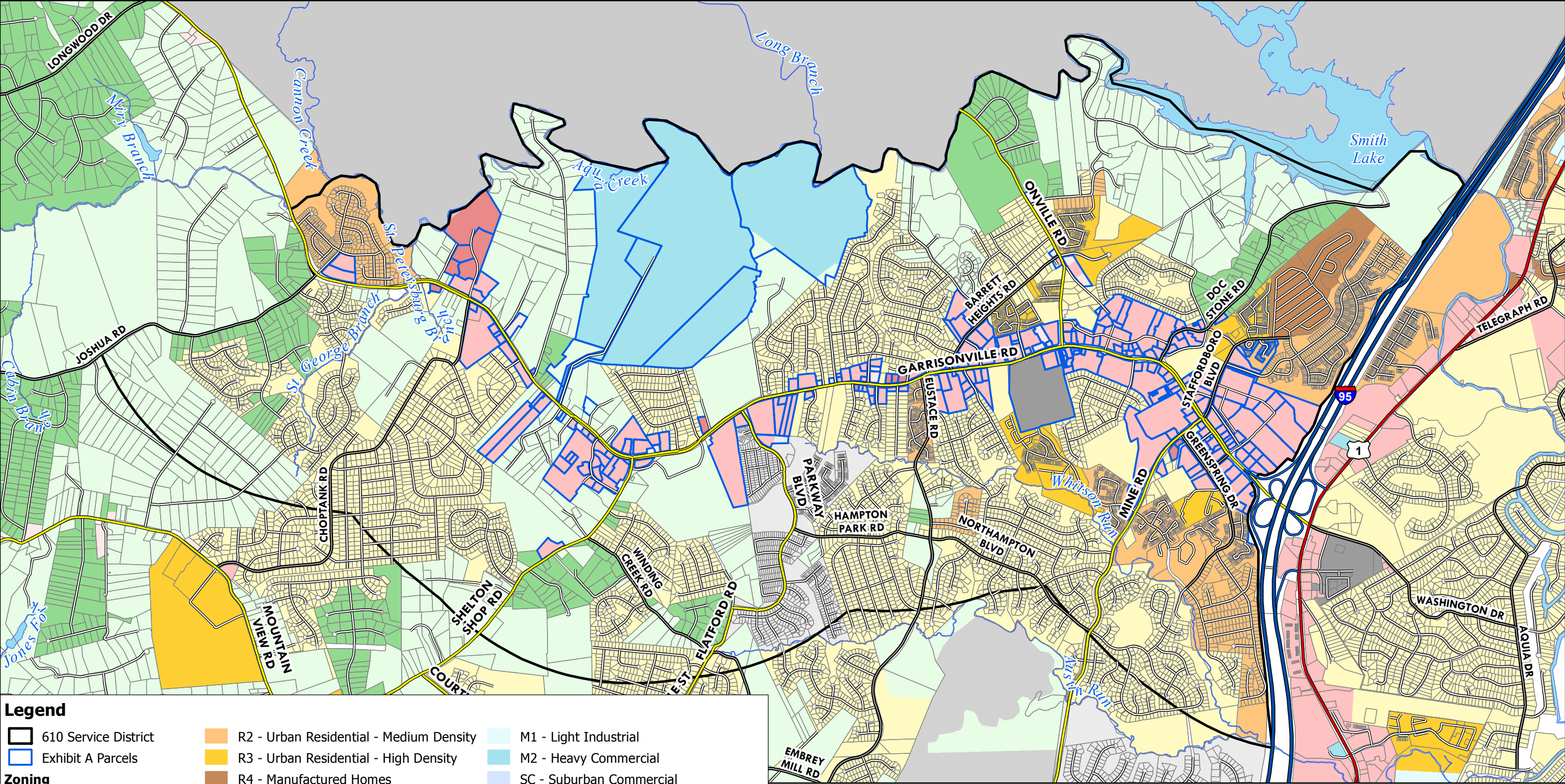




Stafford County 610 Service District

Produced by the Stafford County GIS Office
540-658-4033 | www.StaffordCountyGIS.org



Legend

610 Service District

Exhibit A Parcels

Zoning

A1 - Agricultural

A2 - Rural Residential

R1 - Suburban Residential

R2 - Urban Residential - Medium Density

R3 - Urban Residential - High Density

R4 - Manufactured Homes

B1 - Convenience Commercial

B2 - Urban Commercial

B3 - Office

M1 - Light Industrial

M2 - Heavy Commercial

SC - Suburban Commercial

PD1 - Planned Development 1

PD2 - Planned Development 2

PTND - Planned-Traditional Neighborhood

Data layers are compiled from various sources and are not to be construed or used as a "legal description." Data layers are believed to be accurate, but accuracy is not guaranteed.

