






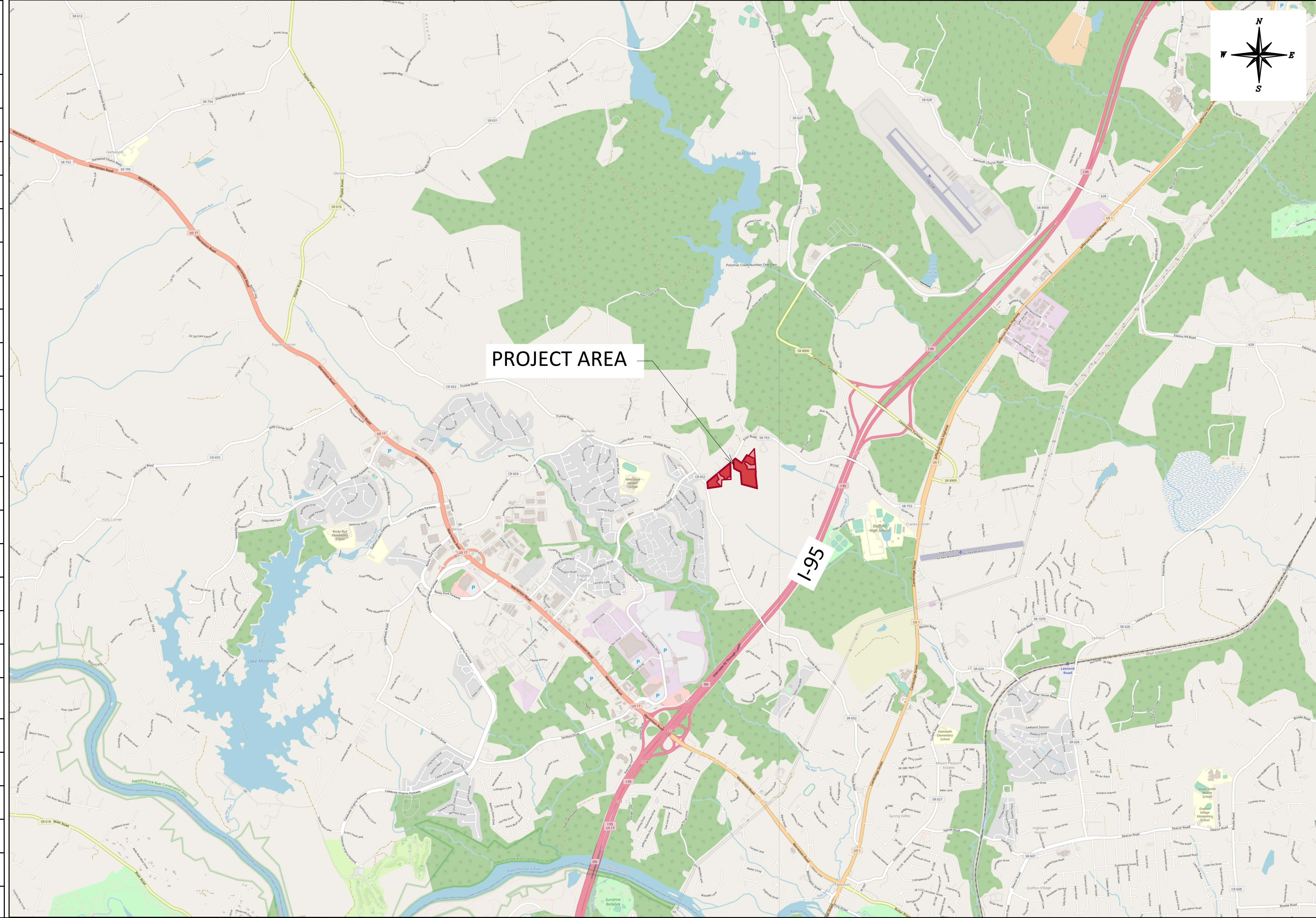
2250 Lucien Way, Suite 305,
Maitland, FL 32751 USA
Phone: 857.998.1826
Approved by: Dave Click

Enon Road Solar Farm, LLC

G101 - COVER SHEET
Vicinity Map
Table Of Contents
Legend
G201 - SITE PLAN SHEET
G202 - GENERAL SETBACKS PLANS
G203 - GROUND FIGURE PLAN

TREE INVENTORY

LEGEND OF SYMBOLS		
TREE INVENTORY		
SYMBOL	COMMON NAME	SCIENTIFIC NAME
	Tulip Poplar	Liriodendron tulipifera
	Black Willow	Salix nigra
	Red Maple	Acer rubrum
	Sweetgum	Liquidambar styraciflua
	Persimmon	Diospyros virginiana
	Mockernut Hickory	Carya tomentosa
	Black Cherry	Pyrus calleryana
	Winged Elm	Ulmus alata
	Black Walnut	Juglans nigra
	Eastern Red Cedar	Juniperus virginiana
	American Sycamore	Platanus occidentalis
	Black Cherry	Prunus serotina
	Silver Maple	Acer saccharinum
	Black Locust	Robinia pseudoacacia
	River Birch	Betula nigra
	Black Locust	Quercus phellos
	Miscellaneous	
SITE DETAILS		
	Existing Trees to Remain	
	Wetlands	
	Stream	
	Residential House	
	Unoccupied Storage or Barn	
	Commercial or Community Building	

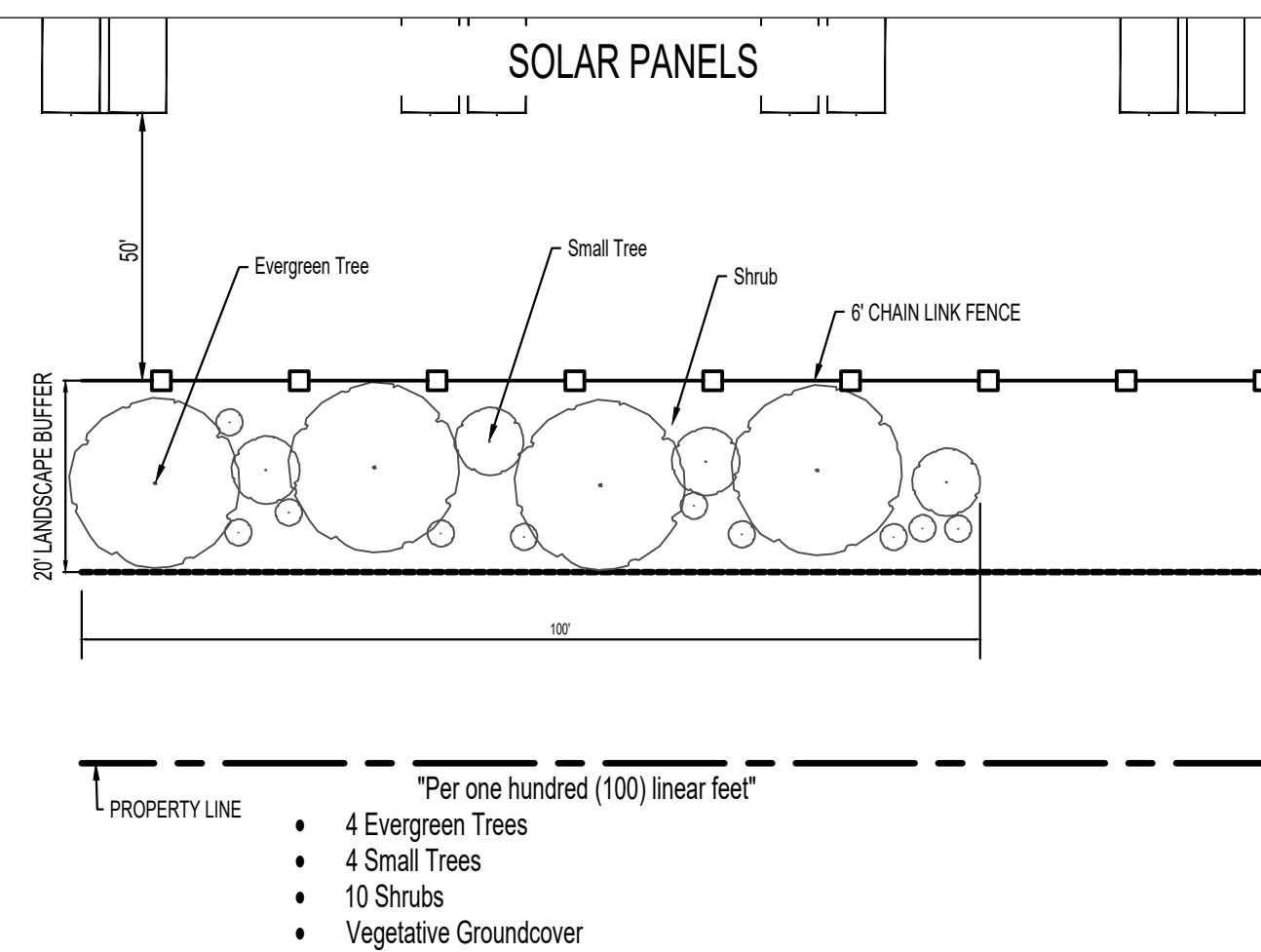
[illegible]

Project Area: 15.8 Acres

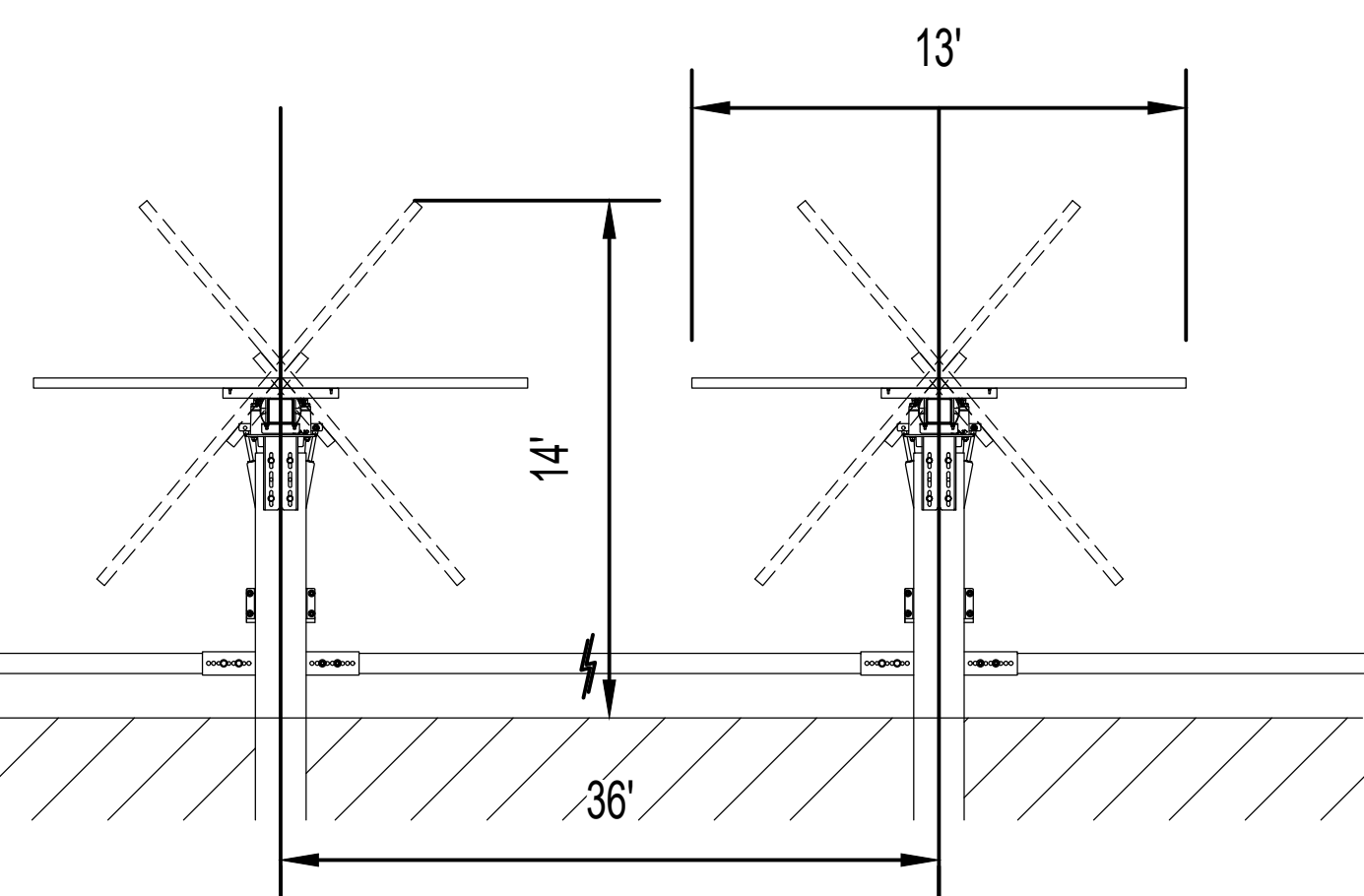
Solar Module Height: 14 ft

This site plan is preliminary and NOT FOR CONSTRUCTION, awaiting surveys as well as awaiting surveys as well as zoning. Layout is based on GIS information, not a survey.

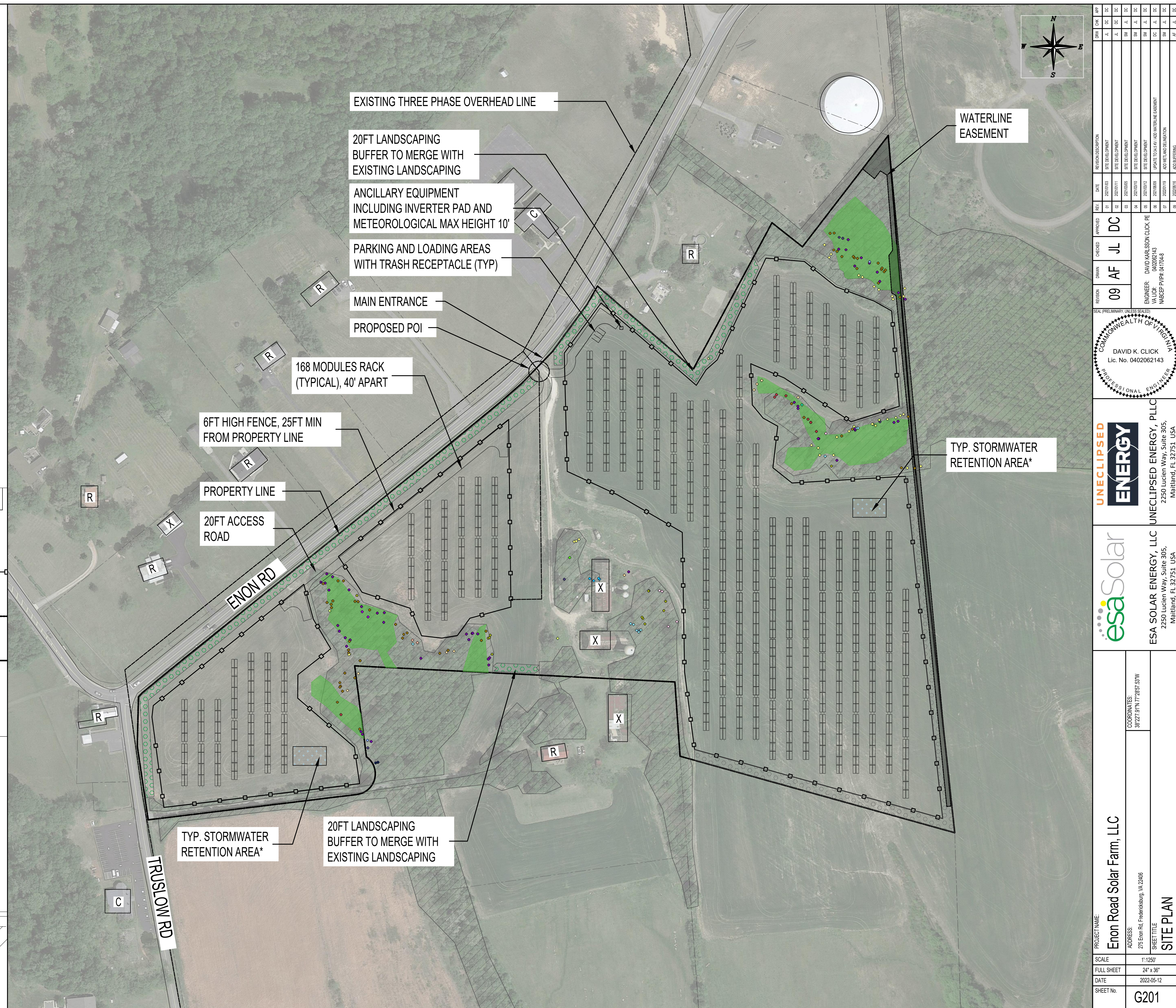
*Applicant will work with DEQ on stormwater approvals



Detail G201.1. LANDSCAPING BUFFER SCALE 1":250'



Detail G201.2. TYPICAL ARRAY SCALE 1':100'

[illegible]

Owner: Soaring Aircraft Sales Llc
Parcel ID: 45 127


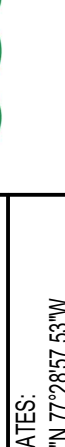
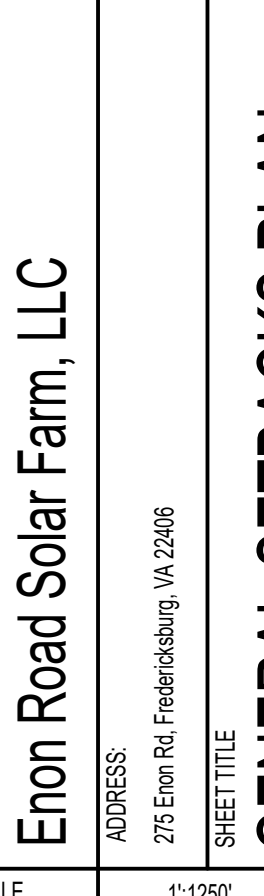
Parcel Area:	35.59 Acres
Fenced Area:	15.75 Acres

Impervious Area: 25,516 sq ft
% 1.65 of Total Area

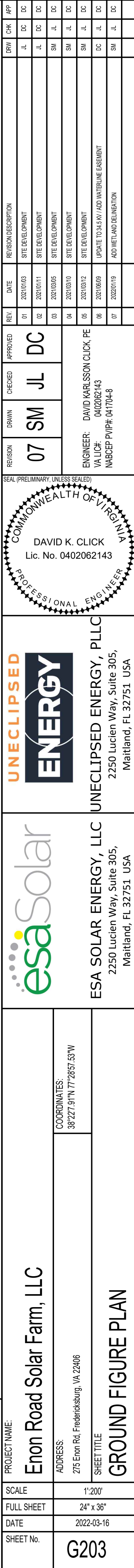
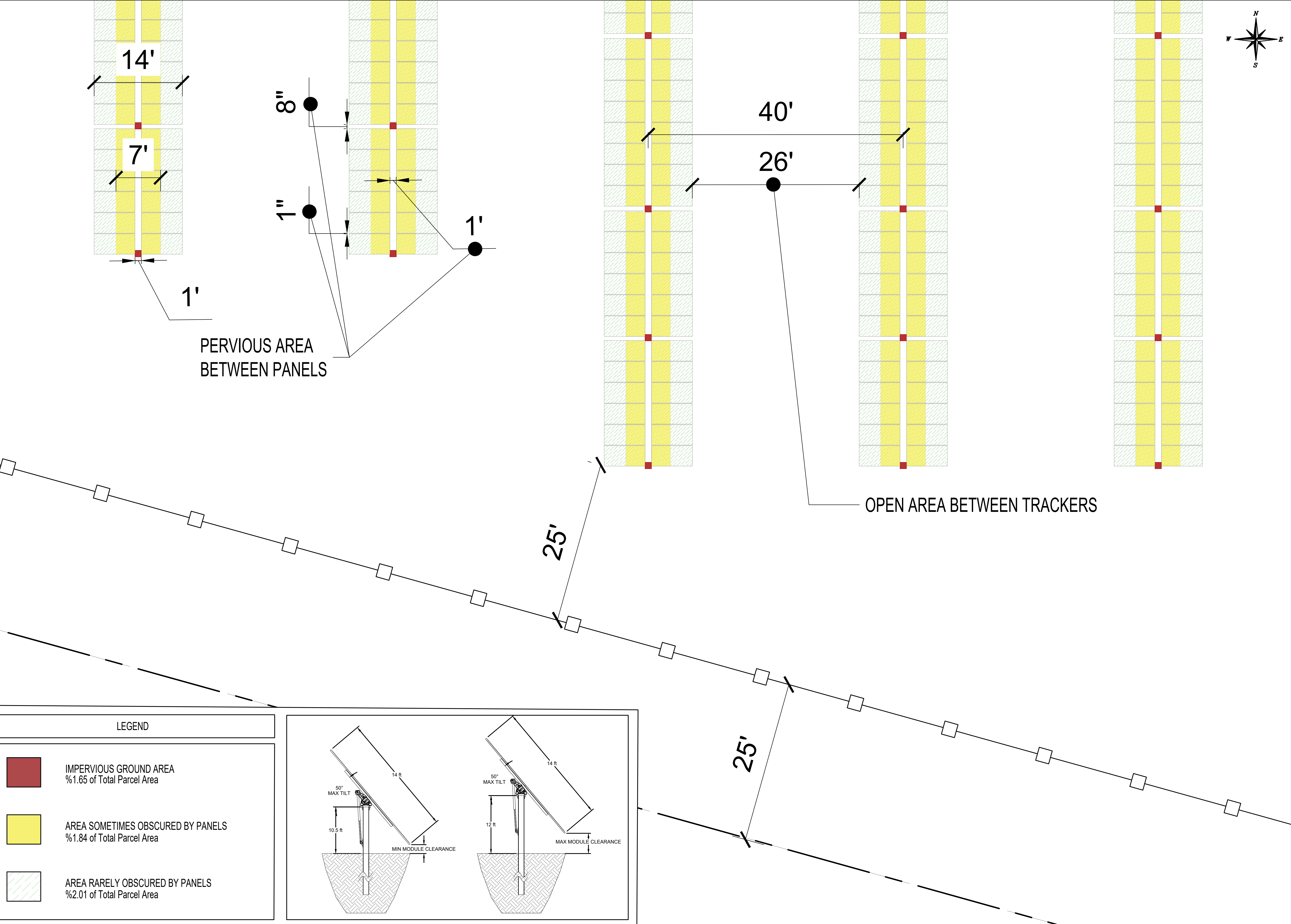
Area Rarely Below Panels: 31,132 sq ft
% 2.01 of Total Area


This site plan is preliminary and NOT FOR CONSTRUCTION, awaiting surveys as well as awaiting surveys as well as zoning. Layout is based on GIS information, not a survey.



PROJECT NAME: Enon Road Solar Farm, LLC	SCALE	1"=120'
	FULL SHEET	24" x 36"
DATE	2022-03-16	
SHEET No.	G202	
ADDRESS: 275 Enon Rd, Frederickburg, VA 22406	COORDINATES: 38°27'9"N 77°58'57.53"W	
<div>  <div> ESA SOLAR ENERGY, LLC 2250 Lucien Way, Suite 305, Maitland, FL 32751 USA </div> </div>		
<div>  <div> UNECLIPSED ENERGY, PLLC 2250 Lucien Way, Suite 305, Maitland, FL 32751 USA </div> </div>		
<div>  </div>		
<div> <div> <div> <div>07</div> <div>SM</div> <div>DC</div> </div> <div> <div>07</div> <div>SM</div> <div>DC</div> </div> <div> <div>07</div> <div>SM</div> <div>DC</div> </div> </div> <div> <div> <div>DATE</div> <div>2022/03/16</div> </div> <div> <div>REVISION DESCRIPTION</div> <div>1. SITE DEVELOPMENT</div> </div> <div> <div>DATE</div> <div>2022/03/16</div> </div> <div> <div>REVISION DESCRIPTION</div> <div>2. SITE DEVELOPMENT</div> </div> <div> <div>DATE</div> <div>2022/03/16</div> </div> <div> <div>REVISION DESCRIPTION</div> <div>3. SITE DEVELOPMENT</div> </div> <div> <div>DATE</div> <div>2022/03/16</div> </div> <div> <div>REVISION DESCRIPTION</div> <div>4. SITE DEVELOPMENT</div> </div> <div> <div>DATE</div> <div>2022/03/16</div> </div> <div> <div>REVISION DESCRIPTION</div> <div>5. SITE DEVELOPMENT</div> </div> <div> <div>DATE</div> <div>2022/03/16</div> </div> <div> <div>REVISION DESCRIPTION</div> <div>6. UPDATE TO 34.5KV 1200 AMPERINE EQUIPMENT</div> </div> <div> <div>DATE</div> <div>2022/03/16</div> </div> <div> <div>REVISION DESCRIPTION</div> <div>7. ADD MET AND DELINEATION</div> </div> </div> <div> <div> <div>DESIGNED BY</div> <div>DAVID KARLSSON</div> </div> <div> <div>CHECKED BY</div> <div>DAVID KARLSSON</div> </div> <div> <div>APPROVED BY</div> <div>DAVID KARLSSON</div> </div> </div> <div> <div> <div>PROJECT NO.</div> <div>0402062143</div> </div> <div> <div>CLIENT</div> <div>UNCLIPSED ENERGY, PLLC</div> </div> <div> <div>PROJECT NAME</div> <div>UNCLIPSED ENERGY, PLLC</div> </div> <div> <div>PROJECT ADDRESS</div> <div>2250 Lucien Way, Suite 305, Maitland, FL 32751 USA</div> </div> </div> </div>		

1



SHEET No.	DATE	FULL SHEET	SCALE	PROJECT NAME: Enon Road Solar Farm, LLC	ADDRESS: 275 Enon Rd, Fredericksburg, VA 22006	COORDINATES: 38°22'7.91"N 77°28'57.53"W	esaSolar ESA SOLAR ENERGY, LLC 2250 Lucien Way, Suite 305, Maitland, FL 32751 USA	UNECLIPSED ENERGY, PLLC 2250 Lucien Way, Suite 305, Maitland, FL 32751 USA		ENGINEER: DAVID KARLSSON CLICK PE VA LIC# 0402062143 NAABCEP PV/PE# 041704-8 2020/01/16 ADD WETLAND DEMARCATION	REVISION	SM	JL	DC	CHECKED	APPROVED	REV#	DATE	PROVISION DESCRIPTION	SWAY	CM
											07	SM	JL	DC			01	2022/04/02	SITE DEVELOPMENT		
																	02	2020/01/16	SITE DEVELOPMENT		
																	03	2020/03/05	SITE DEVELOPMENT		
																	04	2020/03/02	SITE DEVELOPMENT		
																	05	2020/06/09	UPDATED TO 34.4' ADJ WETLAND EASEMENT		
																	07	2020/01/16	ADD WETLAND DEMARCATION		